

FORESTRY & FARMING
EQUIPMENT MANUFACTURER
SINCE 1984



AMR

Product Catalog 
2018



**AMR, FORESTRY & FARMING
EQUIPMENT MANUFACTURER
SINCE 1984**



Since our company was formed in Alsace in 1984, we have been designing and producing machines for firewood production and farming equipment. First and foremost we are a team based on our own recognised expertise and skills. Our main goal: customer satisfaction.

Thanks to our manufacturing process controls we build reliable machines to ensure comfort and safety for the user. Our machines are sold throughout France by 450 specialised dealers and in Europe with the brand Vogesenblitz ("Vosges Mountains lightning").

We hold and attend many events: shows, fairs and open days in France and Europe to introduce our new products to you.



A 50 PEOPLE TEAM AT YOUR SERVICE

MANUFACTURING IS OUR JOB

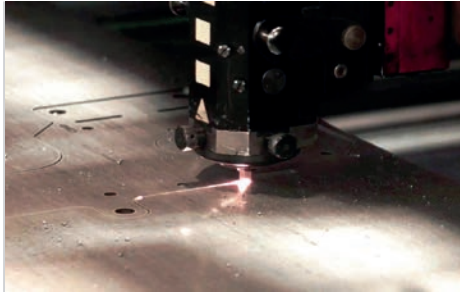
Around 4500 machines are designed and manufactured in our Alsatian 10 700 m² plant. We are proud of making in France quality machines to provide our customers with reliable and efficient products.

From design to assembly, here is the process :



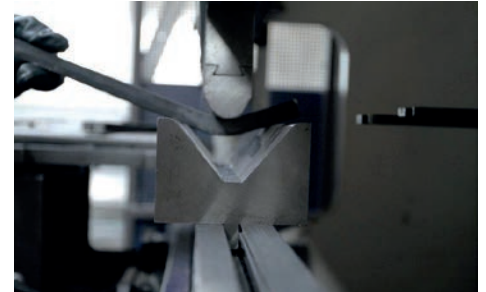
DESIGN - DESIGN OFFICE

To imagine, develop, optimise and design our machines is the role of the Design Office. Our inspiration comes from our customers.



MANUFACTURING - LASER

Parts up to 15mm thick are cut from metal sheets by our laser-cutter.



MANUFACTURING - FOLDING

Parts up to 3000mm wide are folded by our CNC (Computer Numerical Control) machine.



MANUFACTURING - BENDING

Our bending machine is programmed according to the pipe's dimensions. The material elasticity allows complex yet accurate bending.



MANUFACTURING - WELDING

According to the type of welding, fabrication is manual or automated.



MANUFACTURING - PAINTING

When the parts are ready they are powder-coated then baked harden the paint and make it look bright.



MANUFACTURING - ASSEMBLING

The final step is here to assembly all parts!



SUBCONTRACTING - KUHN

Since our creation we offer industrial outsourcing services. Our know-how and experience make us able to meet the requirements for quality, price and deadlines.

One of our oldest customers (33 years) is Kuhn based in Saverne, Alsace.



SUBCONTRACTING - JMEKA

The JMEKA mini diggers are also manufactured in the AMR factory.

More information on www.jmeka.fr



HISTORY

AMR's site is based in Elsenheim in Alsace and bears witness to a rich and varied industrial past.

Its history began at the end of the 19th century when a German company constructed the building to set up a cigar factory there. The facility was bought up in the 1950s and became a weaving company.

There was another change six years later when the Lower-Rhine agricultural machine manufacturing company «Heywang» moved in. In 1984 «Heywang» moved out again and the company was taken over by some of its employees...

1984



Take-over of the factory by some employees who started making forestry winches and log splitters

The «Ateliers Mécaniques du Ried» company was created.

2005



The firm was bought by Robert Heissler who gave it the name AMR.

Through his impetus, AMR devoted its energies and know-how to develop machines for firewood production



2012



Marketing of the new QUATROMAT semi-automatic saw.

After 1 year research and patents, the saw was a resounding success with professionals in the timber industry.

2014



Great year for AMR which celebrated its 30th anniversary!

AMR is staying on track by maintaining a policy of development and innovation on a day-to-day basis.

2015



AMR company changes hands!

Gert Unterreiner, the German leader in the distribution of forestry equipment take the opportunity to make his first steps as manufacturer.



2016



AMR's products have been awarded with a lot of innovation and safety trophies.

2017



1500 square meters of building were added to the production

SUMMARY

| | |
|----------------|---|
| 6 - 45 | SPLITTING RANGE |
| 7-16 | Log splitter up to 55 cm |
| 17-44 | Log splitter up to 100 cm and more |
| 45 | Kindling machine |
| 46 - 68 | SAWING RANGE |
| 48 - 59 | Professional saw <i>QUATROMAT SOLMAT TRI-MAT</i> |
| 60 - 68 | Pivoting log carriage saw, table saw, band-saw and conveyor |
| 70 - 76 | SKIDDING RANGE |
| 71 - 73 | Skidding grapple |
| 74 - 76 | Radio remote control |
| 77 - 85 | HANDLING RANGE |
| 78 - 80 | Grapple and bundler |
| 81 - 85 | Timber claw, timber blade and rotator |
| 86 - 90 | FARMING RANGE |
| 87 | Universal bucket |
| 88 - 90 | Stone fork - Forest Mulcher |
| 91 - 97 | ACCESSORIES |

> Conditions and warranty (see page 99).

SPLITTING RANGE



Vertical splitter 6 Tons - Hobby series

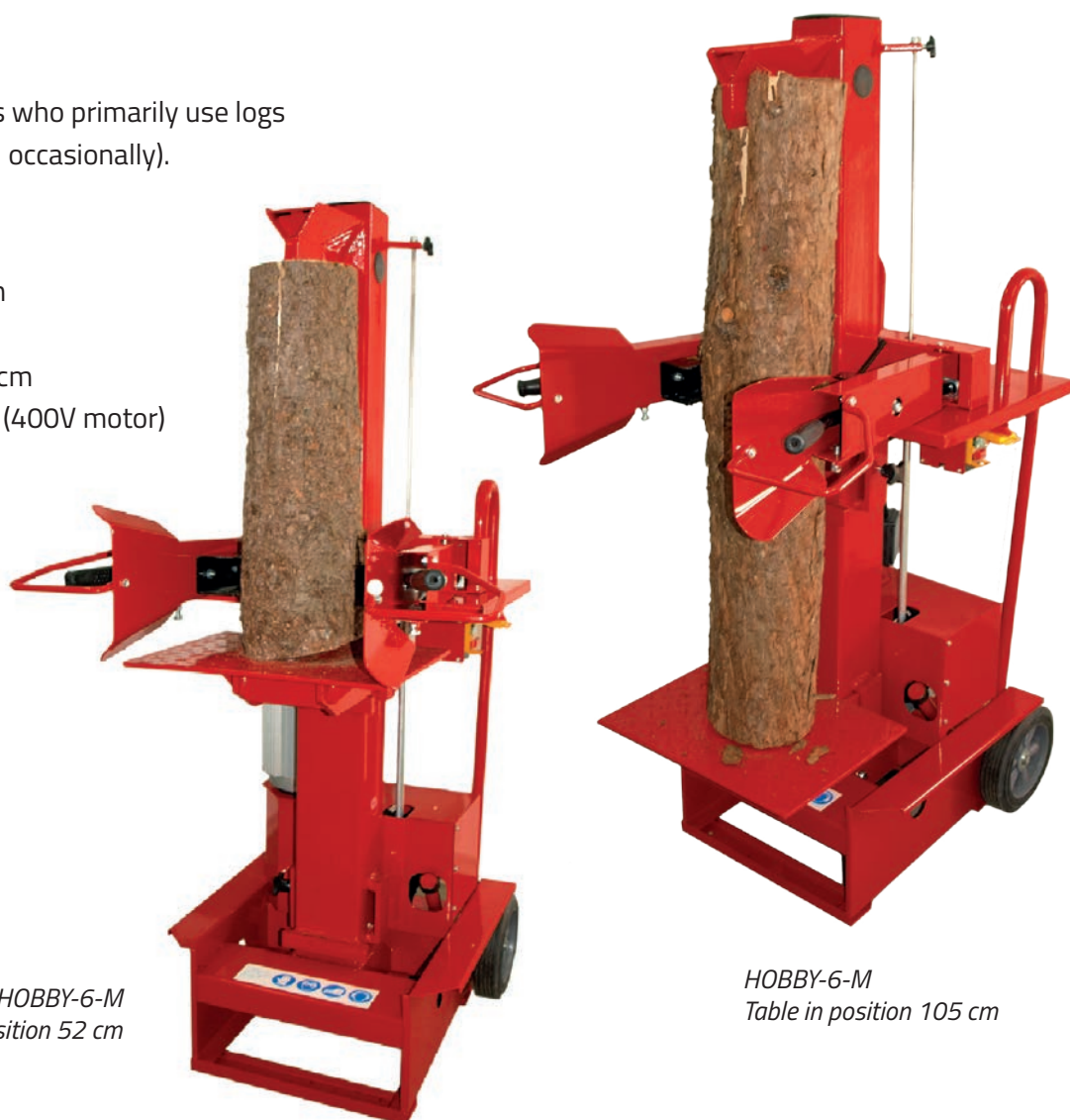
■ Hobby Series

Fits perfectly for individuals who primarily use logs up to 52 cm (and up to 1 m occasionally).
Easy to use and move.

- 2-handed control
- Protected handles system
- Wheels for transport
- 2 table positions 52/105 cm
- Integrated phase inverter (400V motor)
- High return speed
- Split-wedge
- Adjustable cylinder stroke up to 50 cm



Ø 35 cm
< 50/100 cm >



*HOBBY-6-M
Table in position 52 cm*

*HOBBY-6-M
Table in position 105 cm*

| Log splitter | HOBBY-6-M | HOBBY-6-T |
|---------------------------------------|----------------------------|------------------------|
| Tons (to) | 6 | 6 |
| Cutting length (cm) | 105 | 105 |
| Power supply | single-phased 2.2 kW 230 V | three-phase 3 kW 400 V |
| Splitting speed / return speed (cm/s) | 4 - 17 | 4 - 17 |
| Oil capacity (L) | 7 | 7 |
| Pump output (L/min) | 7 | 7 |
| Dimension (HxLxW cm) | 109 x 71 x 54 | 109 x 71 x 54 |
| Table position (cm) | 52 / 105 | 52 / 105 |
| Weight (kg) | 114 | 114 |
| Cross splitter Hobby (FCX000500) | | |
| 400 V female plug (PRI00002) | | |

■ FB500 Series, 6 tons

The FB500 is even more robust and more comfortable. Depending on the model, you can adjust the cutting height (table position : fixed 55 cm / 2 levels 55-105 cm / 3 levels: 55 -75 -105 cm) according to your logs.

- Safety : 2-handed control
- Wheels for transport
- Integrated phase inverter (400V motor)
- High speed return
- Robust and durable design
- Adjustable cylinder stroke up to 50cm



Ø 35 cm
< 50-75-100cm >

FB500/G4 - 6 To
Fixed table



FB500/E2 - 6 To
3-position table

| Log splitter | FB500/G4 M | FB500/G4 T | FB500/E2 M | FB500/E2 T |
|----------------------------------|-------------------------------|-----------------------------|-------------------------------|-----------------------------|
| Tons (to) | 6 | 6 | 6 | 6 |
| Cutting length (cm) | 55 | 55 | 105 | 105 |
| Power supply | single-phased 230 V 2.2 kW | three-phase 400 V 2.2 kW | single-phased 230 V 2.2 kW | three-phase 400 V 2.2 kW |
| Splitting speed (cm/s) | 5 | 5 | 5 | 5 |
| Return speed (cm/s) | 16.7 | 16.7 | 16.7 | 16.7 |
| Oil capacity (L) | 4.75 | 4.75 | 4.75 | 4.75 |
| Pump output (L/min) | 7.5 | 9 | 7.5 | 9 |
| Table position(cm) | Fixe 55 | Fixe 55 | 55-75-105 | 55-75-105 |
| Dimension (HxLxW cm) | 112 x 50 x 80 | 112 x 50 x 80 | 112 x 50 x 80 | 112 x 50 x 80 |
| Weight (kg) | 110 | 110 | 110 | 110 |
| Cross splitter 6/7 (FCX000301) | | | | |
| Split-wedge 6/7 (ECL000301) | | | | |
| 400 V female plug (PRI00002) | | | | |

Vertical splitter 7 Tons - FB500 series

■ FB500 Series, 7 tons

The FB500 is even more robust and more comfortable. Depending on the model, you can adjust the cutting height (table position : fixed 55 cm / 2 levels 55-105 cm / 3 levels 55 - 75 - 105 cm) according to your logs.

- Safety : 2-handed control
- Wheels for transport
- Integrated phase inverter (400 V motor)
- High speed return
- Oil filter
- Robust and durable design
- Adjustable cylinder stroke up to 50cm



| Log splitter | FB500/1 M | FB500/1 T | FB500/1.2 M | FB500/1.2 T |
|------------------------|-------------------------------|-----------------------------|-------------------------------|-----------------------------|
| Tons (to) | 7 | 7 | 7 | 7 |
| Cutting length (cm) | 105 | 105 | 105 | 105 |
| Power supply | single-phased 230 V 2.2 kW | three-phase 400 V 2.2 kW | single-phased 230 V 2.2 kW | three-phase 400 V 2.2 kW |
| Splitting speed (cm/s) | 4.8 | 4.8 | 4.8 | 4.8 |
| Return speed (cm/s) | 12.5 | 12.5 | 12.5 | 12.5 |
| Oil capacity (L) | 10 | 10 | 10 | 10 |
| Pump output (L/min) | 7.5 | 9 | 7.5 | 9 |
| Table position (cm) | 55-105 | 55-105 | 55-75-105 | 55-75-105 |
| Dimension (HxLxW cm) | 112 x 60 x 80 | 112 x 60 x 80 | 112 x 60 x 80 | 112 x 60 x 80 |
| Weight (kg) | 135 | 135 | 138 | 138 |

| | |
|---|----------------------------------|
| Driven with Power Take-Off (PTO), gasoline or combined. Model FB500/05 with fixed table 55 cm. CONTACT US | Cross splitter 6/7 (FCX000301) |
| | Split-wedge 6/7 (ECL000301) |
| | 400 V female plug (PRI00002) |

■ FB509CR Series

The most professional of short splitters, with reinforced frame and removable table with a removable basket. With its 9 Tons power, it is suitable for logs from 50 to 100 cm.

- Safety : 2-handed control with synchronized handles
- High speed return
- Wheels for transport
- Integrated phase inverter (400 V motor)
- Wide floor plate in full steel
- Oil filter
- Automatic knife return
- Robust and durable design
- Adjustable cylinder up to 50 cm
- Specific options: knife extension 105 cm and pivoting table



Ø 40 cm
< 50/100 cm >

*FB509CR
with options
pivoting table and
knife extension*



| Log splitter | FB509CR M | FB509CR T | FB509CR PDF | FB509CR ESS |
|------------------------|-------------------------------|---------------------------|-----------------|------------------------|
| Tons (to) | 9 | 9 | 9 | 9 |
| Cutting length (cm) | 55 (option 105) | 55 (option 105) | 55 (option 105) | 55 (option 105) |
| Pump | double | single | single | double |
| Power supply | single-phased 230 V 2.2 kW | three-phase 400 V 3 kW | PTO tractor | petrol Honda 5.5 HP |
| Splitting speed (cm/s) | 8.2 | 5.6 | 5.7 | 8.7 |
| Return speed (cm/s) | 9.4 | 12.5 | 15.2 | 12.5 |
| Oil capacity (L) | 10 | 10 | 10 | 10 |
| Pump output (L/min) | 19 | 13.5 | 14.7 | 19 |
| Dimension (HxLxW cm) | 130 x 60 x 84 | 130 x 60 x 84 | 130 x 60 x 107 | 130 x 60 x 109 |
| Weight (kg) | 210 | 210 | 210 | 215 |

Combined driving.
CONTACT US

Cross splitter FB509 (FCX000401)

Split-wedge FB509 (ECL000401)

Knife extension 105 cm for FB509CR (RAL00001)

Pivoting table for FB509CR (BOT00002)

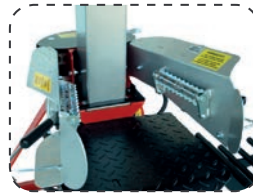
400 V female plug (PRI00002)

Vertical splitter 9 Tons - FB509TF series

■ FB509TF Series

This 9 Tons splitter has two disposal baskets, a fixed table and a 55 cm opening. Safety norm EN609-1.

- Safety : 2-handed control with synchronized handles
- Wheels for transport
- Integrated phase inverter (400 V motor)
- Wide floor plate in full steel
- 2 removable baskets
- Oil filter
- Robust and durable design
- Fixed table
- 50 cm cylinder stroke



Synchronized handholds (patented)



FB509TF with fixed table and 2 removable baskets



Ø 40 cm
< 50 cm >



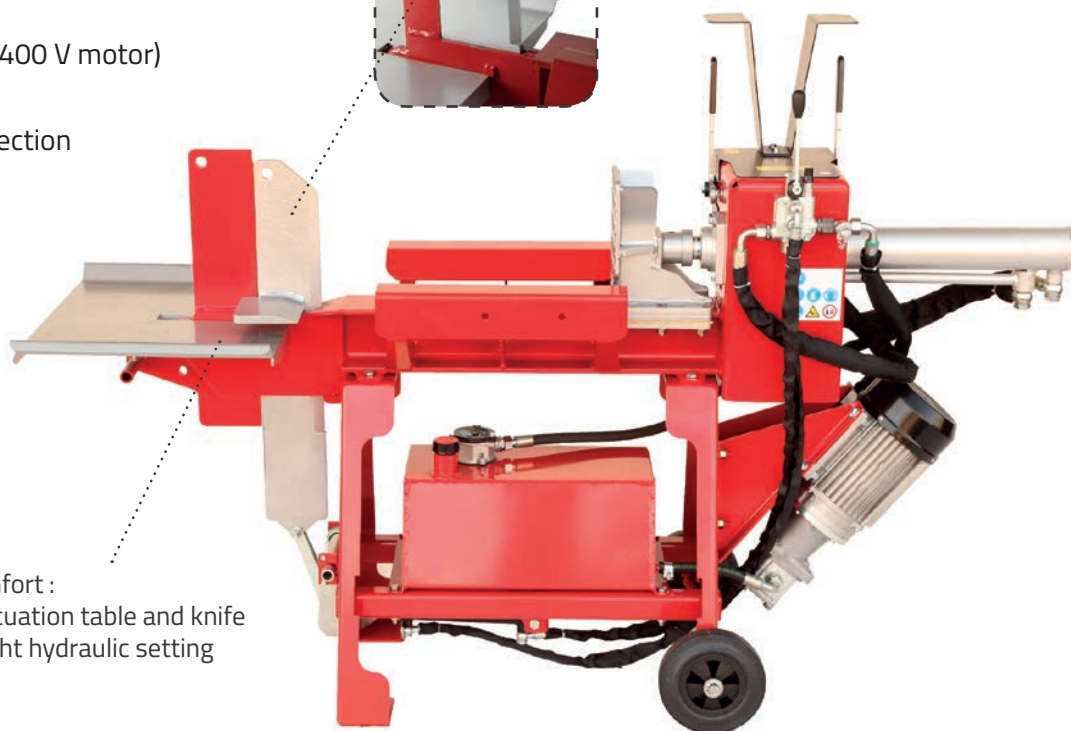
| Log splitter | FB509TF M | FB509TF T | FB509TF PDF | FB509TF ESS |
|------------------------|-------------------------------|---------------------------|----------------|------------------------|
| Tons (to) | 9 | 9 | 9 | 9 |
| Cutting length (cm) | 55 | 55 | 55 | 55 |
| Pump | double | single | single | double |
| Power supply | single-phased 230 V 2.2 kW | three-phase 400 V 4 kW | PTO tractor | petrol Honda 5.5 HP |
| Splitting speed (cm/s) | 8.2 | 6.8 | 5.7 | 8.7 |
| Return speed (cm/s) | 9.4 | 15.2 | 15.2 | 12.5 |
| Oil capacity (L) | 10 | 10 | 10 | 10 |
| Pump output (L/min) | 19 | 16.5 | 14.7 | 19 |
| Dimension (HxLxW cm) | 130 x 60 x 84 | 130 x 60 x 84 | 130 x 60 x 107 | 130 x 60 x 109 |
| Weight (kg) | 190 | 190 | 185 | 205 |

| | |
|---------------------------------|------------------------------------|
| Combined driving. CONTACT US | 400 V female plug (PRI00002) |
| | Cross splitter FB509 (ECL000401) |

■ H09 series

The smallest horizontal splitter with a 9 Tons power.

- Power : 9 Tons with two splitting speeds
- Safety : 2-handed control
- Robust and durable design : welded frame
- Wheels for transport
- Oil filter
- Integrated phase inverter (400 V motor)
- High speed return
- Safety : engine rotating direction detector
- Brass slide rails



Comfort :
Evacuation table and knife
height hydraulic setting



Ø 35 cm
< 50 cm >

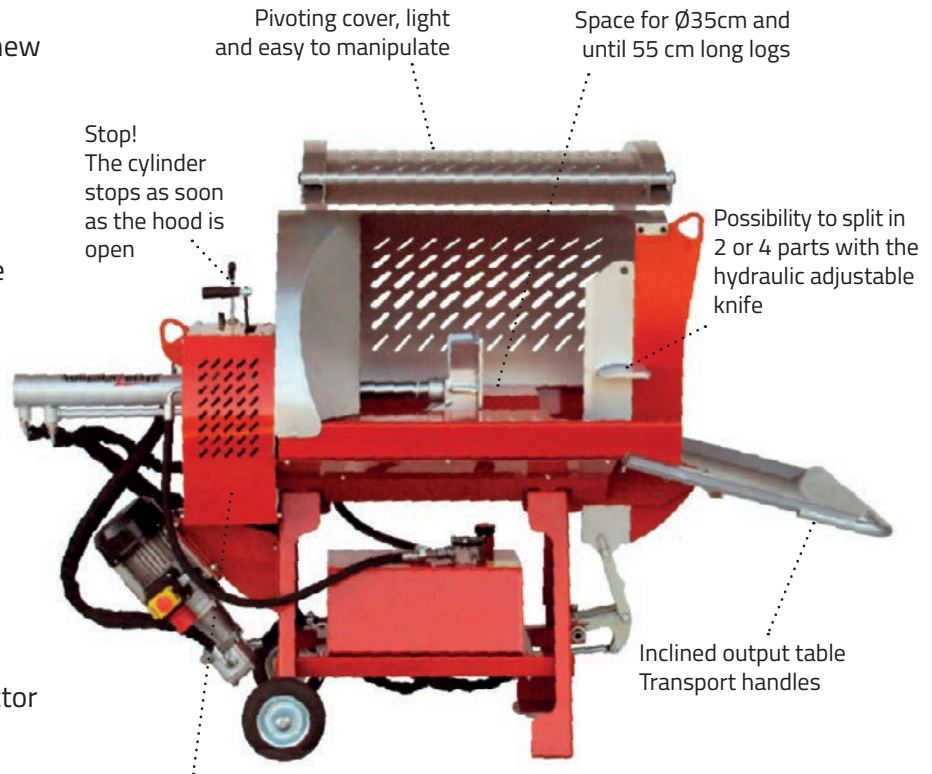
| Log splitter | HEL09 M | HEL09 T |
|---|--|------------------------|
| Tons (to) | 9 | 9 |
| Cutting length (cm) | 55 | 55 |
| Pump | double | single |
| Power supply | single-phased 230 V 2,2 kW | three-phase 400 V 4 kW |
| Splitting speed 1 (cm/s) | 6.6 | 6.4 |
| Splitting speed 2 (cm/s) | 14.8 | 14.7 |
| Return speed (cm/s) | 11.2 | 10.2 |
| Oil capacity (L) | 20 | 20 |
| Pump output (L/min) | 16 | 16.5 |
| Dimension (HxLxW cm) | 135 x 212 x 78 | 135 x 212 x 78 |
| Weight (kg) | 235 | 235 |
| Hydraulic, PTO or combined driving. CONTACT US | 3-points tractor hitch for HEL09 (ATT00010) | |

Horizontal splitter 9 Tons - H09S series

■ H09S series

New semi-automatic splitter adapted to new European safety norm EN 609-1.

- Power : 9 Tons with automatic splitting speeds
- Safety : light pivoting cover easy to manipulate. The cylinder stops when the cover is open.
- Comfort : Inclined evacuation table and knife height hydraulic setting
- Robust and durable design : welded frame
- Wheels for transport
- Oil filter
- Integrated phase inverter (400 V motor)
- High speed return
- Security : engine rotating direction detector (400 V motor)



New semi-automatic control system :
1 pulse = 1 whole cycle. Free hands!
The cylinder has 2 automatic speeds.



Ø 35 cm
< 50 cm >

Hydraulic, PTO or combined driving.
CONTACT US

| Log splitter | HEL09S M | HEL09S T |
|----------------------|----------------------------|------------------------|
| Tons (to) | 9 | 9 |
| Cutting length (cm) | 55 | 55 |
| Pump | double | single |
| Power supply | single-phased 230 V 2.2 kW | three-phase 400 V 4 kW |
| Speed 1 and 2 (cm/s) | auto speed 16 | auto speed 16.2 |
| Return speed (cm/s) | 12.5 | 11.6 |
| Oil capacity (L) | 20 | 20 |
| Pump output (L/min) | 16 | 16,5 |
| Dimension (HxLxW cm) | 135 x 212 x 78 | 135 x 212 x 78 |
| Weight (kg) | 337 | 337 |

■ VEL5507

7 Tons power and 2 speeds for splitting easily logs until 60 cm long. Comfortable with the 230V electrical supply, and easy moving with inflatable wheels and automatic log-grip system.

- Safety : 2-handed control
- Inflatable wheels for easy moving
- Log-grip system
- 62 cm opening
- Two splitting speeds
- Robust and durable design



∅ 35 cm
< 60 cm >



VEL5507

| Log splitter | VEL5507 M |
|----------------------|----------------------------|
| Tons (to) | 7 |
| Cutting length (cm) | 62 |
| Power supply | single-phased 230 V 2.2 kW |
| Speed 1 / 2 (cm/s) | 3.7 / 11 |
| Return speed (cm/s) | 6 |
| Oil capacity (L) | 7 |
| Pump output (L/min) | 7 |
| Dimension (HxLxW cm) | 160 x 65 x 80 |
| Weight (kg) | 139 |

Horizontal/vertical splitter 9-12 Tons - HV series

■ HV series

A splitter model that can be used in vertical either horizontal position. Available in 9/12 Tons and with double speed.

- Safety : 2-handed control
- 62 cm opening
- Use in horizontal or vertical position
- Inflatable wheels for easy moving
- Trail support included (gasoline models)
- Integrated phase inverter (400 V motor)
- Robust and durable design : welded frame
- Floor plate in full steel
- Brass guiding system



Ø 40 cm
< 60 cm >



*HVES12
transport position*



*HVE9 M
vertical position*



*HVE9 M
horizontal position*

| Log splitter | HVE09 MSP | HVE09 MDP | HVE09 T | HVES09 | HVE12 MSP | HVE12 MDP | HVE12 T | HVES12 |
|---|-------------------------------|-------------------------------|---------------------------|------------------------|-------------------------------|-------------------------------|---------------------------|------------------------|
| Tons (to) | 9 | 9 | 9 | 9 | 12 | 12 | 12 | 12 |
| Cutting length (cm) | 62 | 62 | 62 | 62 | 62 | 62 | 62 | 62 |
| Pump | single | double | single | double | single | double | single | double |
| Power supply | single-phased 230 V 2,2 kW | single-phased 230 V 2,2 kW | three-phase 400 V 3 kW | petrol Honda 5.5 HP | single-phased 230 V 2,2 kW | single-phased 230 V 2,2 kW | three-phase 400 V 4 kW | petrol Honda 5.5 HP |
| Speed 1 (cm/s) | 3.2 | 6.62 | 5.6 | 8.13 | 2.51 | 4.23 | 4.2 | 5.6 |
| Speed 2 (cm/s) | 7.74 | 14.8 | 13 | 18.86 | 6.22 | 10.07 | 11.5 | 14.61 |
| Return speed (cm/s) | 5.1 | 11.2 | 9.8 | 13.7 | 4.02 | 7.2 | 6.8 | 9.82 |
| Oil capacity (L) | 13 | 13 | 13 | 13 | 13 | 13 | 13 | 13 |
| Pump output | 7.5 L/min | 18.6 L/min | 13.5 L/min | 19 L/min | 7.5 L/min | 18.6 L/min | 16.5 L/min | 19 L/min |
| Dimension in vertical position (HxLxW cm) | 162x76x100 | 162x76x100 | 162x76x100 | 162x76x230 | 162x76x100 | 162x76x100 | 162x76x100 | 162x76x230 |
| Weight (kg) | 200 | 200 | 200 | 220 | 205 | 205 | 205 | 225 |
| Cross splitter (FCX000901) | | | | | | | | |
| 400 V female plug (PRI00002) | | | | | | | | |
| Trail support (TIM000200) | | | | | | | | |

■ V5509/V5512 series

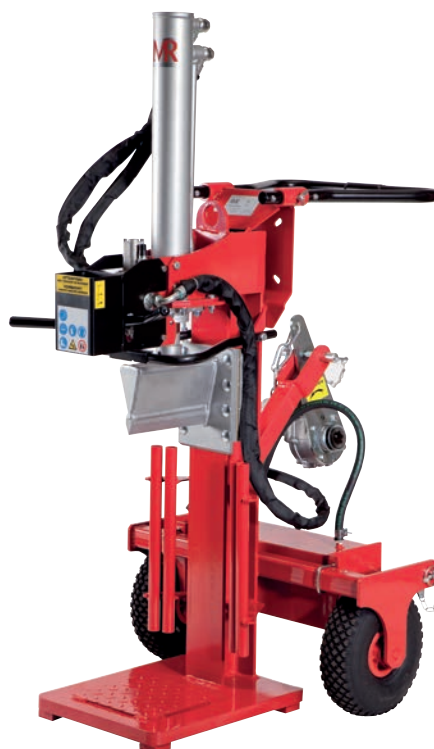
This vertical splitter is ideal for garden tractor, and available in PTO or hydraulic driving.

9 or 12 Ton power with double splitting speed.

- Safety: 2-handed control
- Inflatable wheels for easy moving
- 62 cm opening
- Two splitting speeds
- Robust and durable design: welded frame
- Floor plate in full steel
- Female gear box pump
- Brass guiding system
- 3-point hitch, cat. I and II



Ø 40 cm
< 60 cm >



VPF5509

| Log splitter | VHY5509 | VPF5509 | VHY5512 | VPF5512 |
|---------------------------------|--------------------------------|----------------|-------------------|----------------|
| Tons (to) | 9 | 9 | 12 | 12 |
| Cutting length (cm) | 62 | 62 | 62 | 62 |
| Pump | - | Single | - | Single |
| Power supply | hydraulic tractor | PTO tractor | hydraulic tractor | PTO tractor |
| Speed 1 (cm/s) | | 9.1 | | 7.8 |
| Speed 2 (cm/s) | * | 18.9 | * | 16.8 |
| Return speed (cm/s) | | 13.5 | | 13.1 |
| Oil capacity (L) | * | 13 | * | 13 |
| Pump output (L/min) | * | 14.7 | * | 14.7 |
| Dimension (HxLxW cm) | 162 x 76 x 100 | 162 x 76 x 100 | 162 x 76 x 100 | 162 x 76 x 100 |
| Weight (kg) | 185 | 195 | 190 | 200 |
| Combined driving. CONTACT US | Cross splitter (FCX000901) | | | |
| | PTO plug (PRO00061) | | | |
| | 400 V female plug (PRI00002) | | | |

*Depending from tractor output

Vertical splitter 9 Tons - V09 series

■ V09 series

A 108 cm opening for a 9 Tons power, with automatic log-grip arm. The whole machine is also easy to move with the inflatable wheels.

- Safety : 2-handed control
- 108 cm opening
- Retractable cylinder for storage
- Inflatable wheels for easy moving
- Two splitting speeds
- Brass guiding system
- High speed return
- Automatic log support arm
- Floor plate in full steel
- Female gear box pump (PTO model)



Ø 40 cm
< 100 cm >



VELO9 M

| Log splitter | VELO9 M | VELO9 T | VPF09 | VES09 |
|----------------------|-------------------------------|---------------------------|-----------------|------------------------|
| Tons (to) | 9 | 9 | 9 | 9 |
| Cutting length (cm) | 108 | 108 | 108 | 108 |
| Pump | double | single | single | double |
| Power supply | single-phased 230 V 2,2 kW | three-phase 400 V 4 kW | PTO tractor | Petrol Honda 5.5 HP |
| Speed 1 (cm/s) | 6.6 | 7 | 8.1 | 6.3 |
| Speed 2 (cm/s) | 14.8 | 16.1 | 18.9 | 13.8 |
| Return speed (cm/s) | 11.2 | 11.9 | 13.5 | 11.2 |
| Oil capacity (L) | 13 | 13 | 13 | 13 |
| Pump output (L/min) | 18.6 | 16.5 | 14.7 | 19 |
| Dimension (HxLxW cm) | 250-182 *x80x80 | 250-182 *x80x80 | 250-182 *x80x80 | 250-182 *x80x80 |
| Weight (kg) | 225 | 225 | 220 | 230 |

Hydraulic and combines driving.
CONTACT US

Cross splitter (FCX000901)

3-points tractor hitch for VEL/VPF/VPE09 (OPT00001)

400 V female plug (PRI00002)

Intermediate table for V09 with end sensor (TAB000600)

PTO plug (PRO00061)

* Work - transport position

The options and accessories can be installed on the assembly line or afterwards.

See accessories page 24 & 25

Lifting hook

2-handed control with log-grip arm

Inclined knife for easy wood splitting

Sapie support

Cutting length 108 cm

Steel beam

Non-skid floor plate in full steel

Beam welded in the floor plate for more resistance

2-handed control with 2 speeds

Retractable cylinder (no tool needed)

Stop for cutting height adjustment

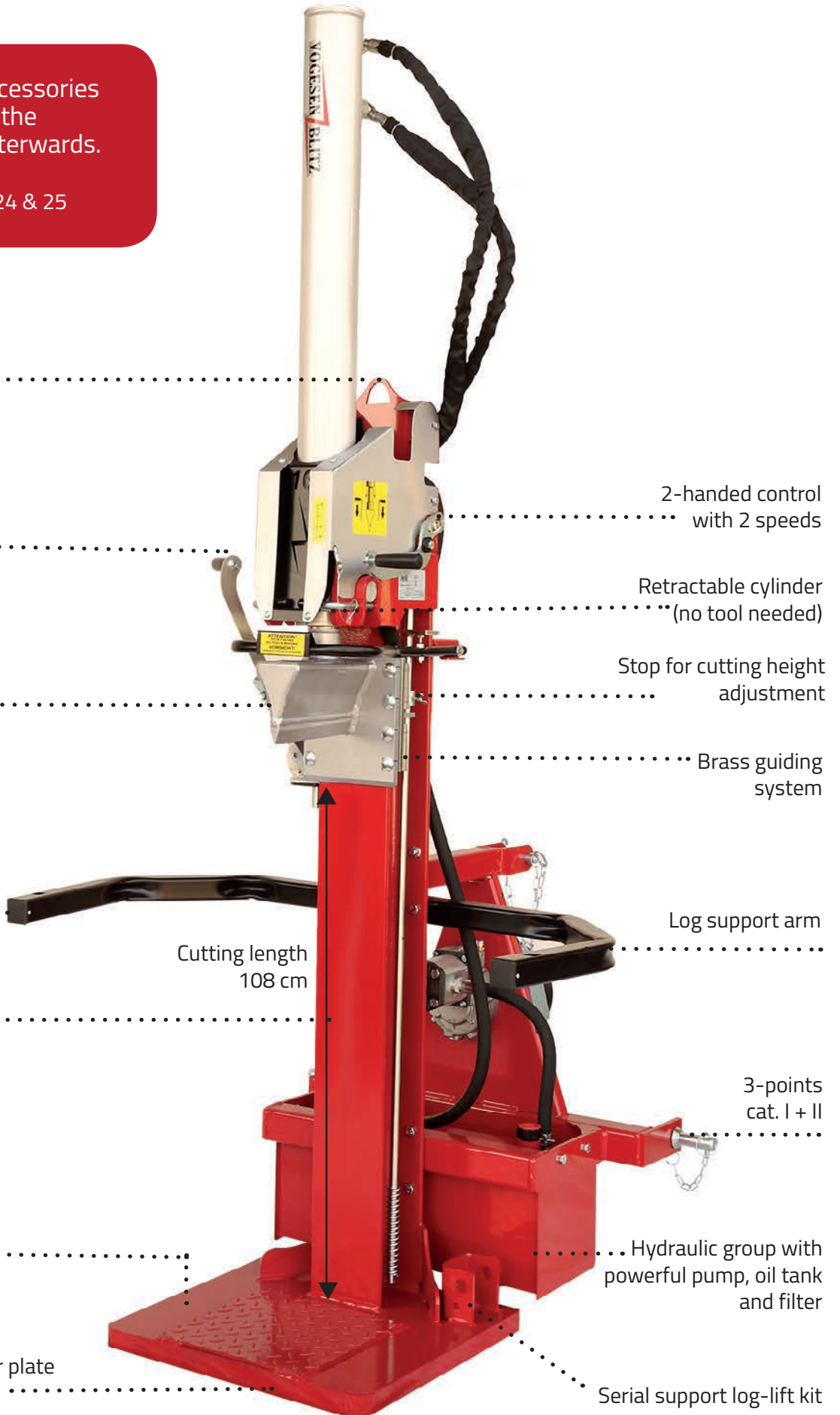
Brass guiding system

Log support arm

3-points cat. I + II

Hydraulic group with powerful pump, oil tank and filter

Serial support log-lift kit





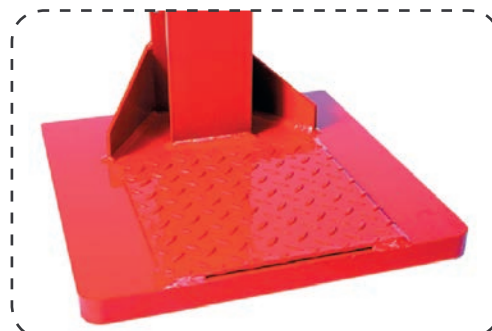
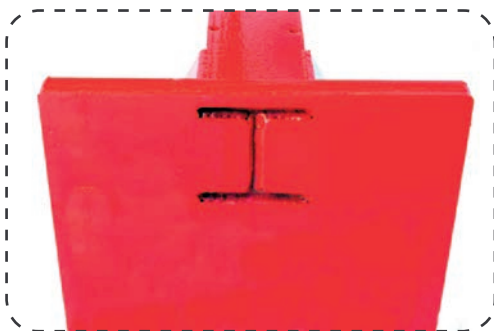
Safety :
The 2-handed control allows to split logs safely. Left hand is for holding the wood and right hand activates the first then the second speed. When both levers are released the cylinder will return automatically



Ergonomic knife in wedge shape for splitting easily. Inclined returns to maintain the wood.



Sapie support for more comfort.



For robustness the steel beam is set into the floor plate and welded on both sides.

■ V12 series

The V12 series splitters are full of reliability and performance. They have double cylinder speed, automatic knife return, retractable cylinder, and they can have various accessories and options. Sapie support included.



VPF12
in transport position



VHY12



VPE12

| Log splitter | VEL12 | VHY12 | VPF12 | VES12 | VHE12 | VPE12 |
|----------------------|--|----------------------|----------------|----------------------|----------------------------|------------------------------|
| Tons (to) | 12 | 12 | 12 | 12 | 12 | 12 |
| Cutting length (cm) | 108 | 108 | 108 | 108 | 108 | 108 |
| Pump | single | - | single | double | single | single/single |
| Power supply | three-phase 400 V 4 kW | hydraulic tractor | PTO tractor | petrol Honda 9 HP | hydraulic + Elec. 400 V | PTO tractor + Elec. 400 V |
| Speed 1 (cm/s) | 7.7 | | 11.4 | 14.1 | */7.7 | 11.4/7.7 |
| Speed 2 (cm/s) | 16.7 | * | 25.6 | 24.9 | */16.7 | 25.6/16.7 |
| Return speed (cm/s) | 12.5 | | 18.9 | 22.3 | */12.5 | 18.9/12.5 |
| Oil capacity (L) | 28 | * | 28 | 28 | 28 | 28 |
| Pump output (L/min) | 21 | * | 37 | 37 | */21 | 37/21 |
| Dimension (HxLxW cm) | 250 (work position) / 190 (transport position) x 120 x 110 (68 on VHY12) | | | | | |
| Weight (kg) | 370 | 275 | 320 | 345 | 360 | 370 |

* Depending from tractor output

Supplement for 120 cm opening (cylinder 1 m)

Supplement for female pump on VPF12

See all options & accessories page 24 & 25

Vertical splitter 16 Tons - V16 series

■ V16 series

The V16 series splitters are designed to be robust. They have double cylinder speed, automatic knife return, retractable cylinder, and they can have various accessories and options. Sapie support included.



| Log splitter | VEL16 | VHY16 | VPF16 | VES16 | VHE16 | VPE16 |
|----------------------|--|----------------------|----------------|----------------------|----------------------------|------------------------------|
| Tons (to) | 16 | 16 | 16 | 16 | 16 | 16 |
| Cutting length (cm) | 108 | 108 | 108 | 108 | 108 | 108 |
| Pumpe | double | - | single | double | double | single/double |
| Power supply | three-phase 400 V 4 kW | hydraulic tractor | PTO tractor | petrol Honda 9 HP | hydraulic + Elec. 400 V | PTO tractor + Elec. 400 V |
| Speed 1 (cm/s) | 9.5 | | 10.6 | 8.7 | */9.5 | 10.6/9.5 |
| Speed2 (cm/s) | 20.9 | * | 27.8 | 18.1 | */20.9 | 27.8/20.9 |
| Return speed (cm/s) | 14.2 | | 16 | 11.3 | */14.2 | 16/14.2 |
| Oil capacity (L) | 28 | * | 28 | 28 | 28 | 28 |
| Pump output (L/min) | 42 | * | 54 | 37 | */42 | 54/42 |
| Dimension (HxLxW cm) | 250 (work position) / 190 (transport position) x 120 x 110 (68 on VHY16) | | | | | |
| Weight (kg) | 410 | 310 | 370 | 370 | 395 | 420 |

* Depending from tractor output

| |
|--|
| Supplement for 120 cm opening (cylinder 1 m) |
| Supplement for female pump on VPF16 |
| See all options & accessories page 24 & 25 |

■ V20 series

The V20 series splitters are designed to be robust, reliable and efficient. They have double cylinder speed, automatic knife return, retractable cylinder, and they can have various accessories and options. Sapie support included.



Ø 80 cm
< 100 cm >



VPF20

| Log splitter | VEL20 | VHY20 | VPF20 | VHE20 | VPE20 |
|----------------------|--|----------------------|----------------|----------------------------|------------------------------|
| Tons (to) | 20 | 20 | 20 | 20 | 20 |
| Cutting length (cm) | 108 | 108 | 108 | 108 | 108 |
| Pump | double | - | single | double | single/double |
| Power supply | three-phase 400 V 5,5 kW | hydraulic tractor | PTO tractor | hydraulic + Elec. 400 V | PTO tractor + Elec. 400 V |
| Speed 1 (cm/s) | 7.9 | | 10.8 | */7.9 | 10.8/7.9 |
| Speed 2 (cm/s) | 24.8 | * | 28 | */24.8 | 28/24.8 |
| Return speed (cm/s) | 15.4 | | 16.4 | */15.4 | 16.4/15.4 |
| Oil capacité (L) | 40 | * | 40 | 40 | 40 |
| Pump output (L/min) | 52 | * | 60 | */52 | 60/52 |
| Dimension (HxLxW cm) | 264 (work position) / 190 (transport position) x 120 x 120 | | | | |
| Weight (kg) | 500 | 425 | 475 | 450 | 510 |

* Depending from tractor output

Supplement for 120 cm opening (cylinder 1 m)

See all options & accessories page 24 & 25

Vertical splitter 25 Tons - V25 series

■ V25 series

The V25 series splitters are designed to be robust, reliable and efficient. They have double cylinder speed, automatic knife return, retractable cylinder, and they can have various accessories and options. Sapie support and cast iron pump included.



| Log splitter | VEL25 | VPF25 | VPE25 |
|----------------------|--|-------------|------------------------------|
| Tons (to) | 25 | 25 | 25 |
| Cutting length (cm) | 108 | 108 | 108 |
| Pump | double | single | single/double |
| Power supply | three-phase 400 V 5.5 kW | PTO tractor | PTO tractor + Elec. 400 V |
| Speed 1 (cm/s) | 8 | 10.1 | 10.1/8 |
| Speed 2 (cm/s) | 16.2 | 30.3 | 30.3/16,2 |
| Return speed (cm/s) | 11.7 | 14.9 | 14.9/11.7 |
| Oil capacity (L) | 62 | 62 | 62 |
| Pump output (L/min) | 52 | 70 | 70/52 |
| Dimension (HxLxW cm) | 264 (work position) / 190 (transport position) x 120 x 120 | | |
| Weight (kg) | 545 | 530 | 580 |

* Depending from tractor output

Supplement for 120 cm opening (cylinder 1 m)

See all options & accessories page 24 & 25

COMPLETE YOUR LOG SPLITTER BY ADDING FUNCTIONS

Accessories - V12/16/20/25 Series

The options and accessories can be installed on the assembly line or afterwards.

If you order a log winch kit, please give us the model, year and if your splitter already has a hydraulic log lift.

If you order an oil cooler set, please tell us if you already have a log winch and/or a hydraulic log lift.



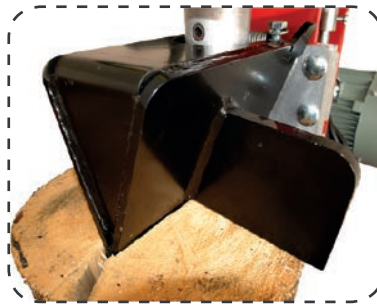
Intermediate support for splitter and bundler



Mechanical log lift



Hydraulic log lift



Cross splitter



Intermediate table



Sappie



Wheels and handling lever (3 wheels), 2 wheels only for VHY models

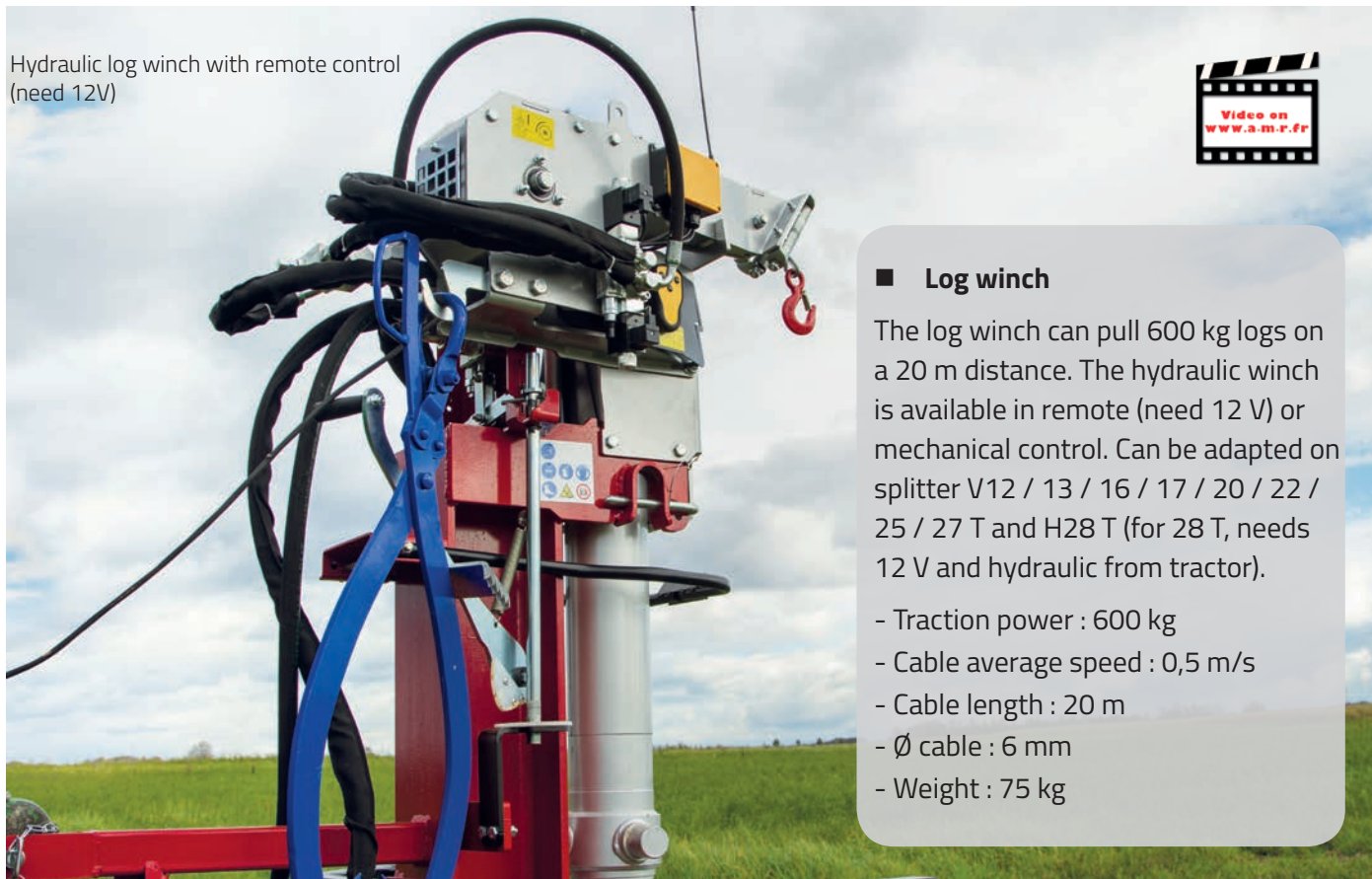
| | |
|---|----------------------------|
| Transformation kit VHY12 to VPF12* | TRA00006 |
| Transformation kit VHY16 to VPF16* | TRA00012 |
| Transformation kit VPF12 VPE12 SP* | TRA00004 |
| Transformation kit VPF16 to VPE16* | TRA00009A |
| Intermediate support for splitter and bundler (large-angle PTO shaft recommended) V12/V27 | New Model SUP000102 |
| Cross splitter 12/16 | FCX000100 |
| Cross splitter 20/25 | FCX000200 |
| Split-wedge 12/16 | ECL000100 |
| Split-wedge 20/25 | ECL000200 |
| Intermediate table V12 / V16 | TAB000101 / TAB000201 |
| Intermediate table V20 / V25 | TAB000501 / TAB000301 |
| Mechanical log lift V12 / V16 | LBM000100 |
| Mechanical log lift V20 / V25 | LBM000200 |
| Hydraulic log lift V12 / V16 | LBH000200 |
| Hydraulic log lift V20 / V25 | LBH000100 |
| Wheels and handling lever 12/13/16/17 (3 wheels) Cat.2 | RTM000202 |
| Wheels and handling lever 12/13/16/17 for hydraulic model (2 wheels) Cat.2 | RTM000300 |
| Oil cooler set 12/13/16/17 (for intensive use) | REF10000 |
| Oil cooler set 20/22/25/27 (for intensive use) | REF10001 |
| PTO shaft (type3) | CAR00001 / CAR00025 |
| Tachometer and hour meter VPF/VPE for PDF | COM000500 |
| Sappie 380 mm / 800 mm | SAP00001 / SAP00002 |

Log winch for splitters mechanical or remote control

COMPLETE YOUR LOG SPLITTER
BY ADDING FUNCTIONS

1

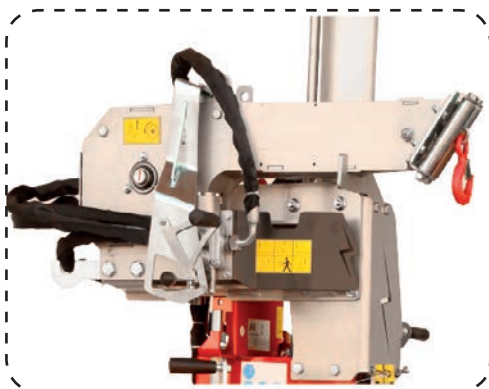
Hydraulic log winch with remote control
(need 12V)



■ **Log winch**

The log winch can pull 600 kg logs on a 20 m distance. The hydraulic winch is available in remote (need 12 V) or mechanical control. Can be adapted on splitter V12 / 13 / 16 / 17 / 20 / 22 / 25 / 27 T and H28 T (for 28 T, needs 12 V and hydraulic from tractor).

- Traction power : 600 kg
- Cable average speed : 0,5 m/s
- Cable length : 20 m
- Ø cable : 6 mm
- Weight : 75 kg



Hydraulic log winch with mechanical control
for vertical model



| | |
|---|-----------|
| Mechanical log winch V12/16 | TTB000206 |
| Mechanical log winch V13/17 | TTB100001 |
| Mechanical log winch V20/25 | TTB000103 |
| Mechanical log winch V22/27 | TTB200001 |
| Remote controlled log winch V12/16 | TTB000207 |
| Remote controlled log winch V13/17 | TTB100002 |
| Remote controlled log winch V20/25 | TTB000104 |
| Remote controlled log winch V22/27 | TTB200002 |
| Remote controlled log winch H28 for model on farm axle | TTB000300 |
| Remote controlled log winch H28 | TTB000301 |
| Pliers for winch 70 cm 2000 kg | PIN000300 |
| Pliers for winch 55 cm 1500 kg | PIN000200 |
| Hook for winch | CRO000100 |

Log winches can be assembled on factory or afterwards with our kits.

Please tell us your splitter model, power supply, year, and if it has an hydraulic log-lift.

According to standards, a winch can be used only when the splitter is linked to a tractor.

PROFESSIONAL, HEAVY DUTY LOG SPLITTING!

13 - 17 - 22 - 27 Tons

- > More power
- > More safety
- > More comfort

**PATENTED**

*European safety
standard
EN 609-1*



Safety trophy
Forexpo 2016



Innovation trophy
Space 2016



GS safety certification
(German security test)



Cylinder stroke with 105 cm retractable without tools

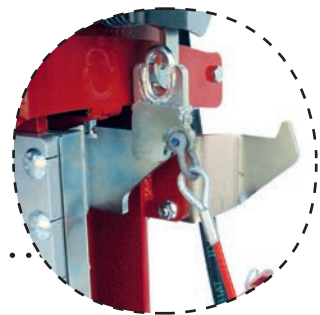
New mechanism, smoother and stronger with a latching system (good for short logs)



Design thermoformed hood



Adjustable claw to hold all logs (from 8 cm)



Mechanical lift (really convenient)

Larger and sharper knife

Larger log support arm with adjustable claw for wood, and sapie support

Cutting length 115 cm



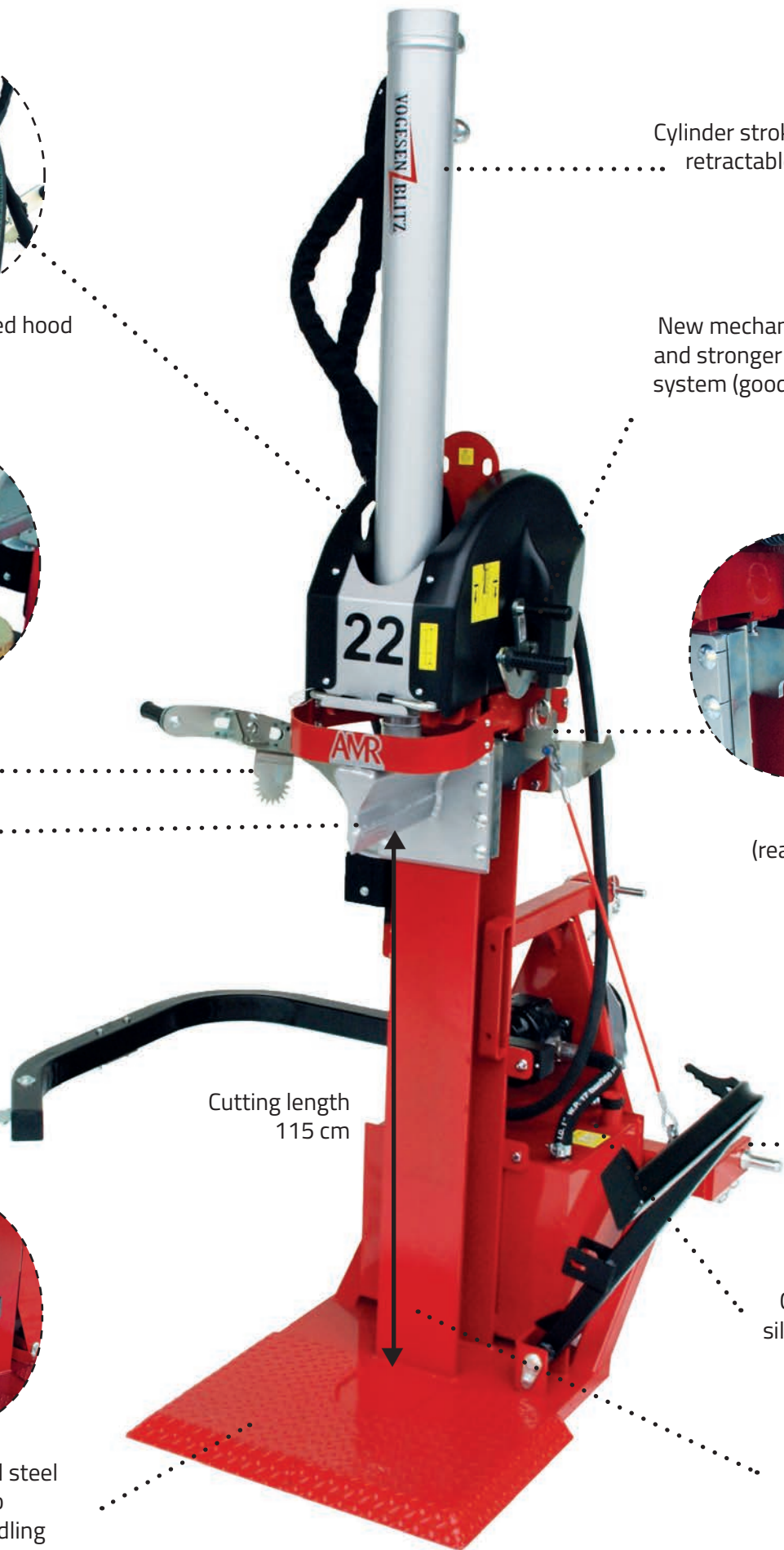
3-points cat. I + II

Cast iron pump, silent and robust. Bigger tank.



Non-skid plate in full steel with angled edges to facilitate timber handling

Massive beam



■ V13 series

This splitter has been improved in ergonomics, power and speeds, conform to safety standard EN609-1.

- Maximal safety for work
- 2-handed control
- Mechanical log-lift
- 115 cm opening
- Retractable cylinder for storage
- 2 speeds
- Brass guiding system with grease point
- Non-skid plate in full steel with angled edges
- Aluminium pump



Ø 70 cm
< 115 cm >



VPE13
with hydraulic log-lift

| Log splitter | VEL13 | VHY13 | VPF13 | VHE13 | VPE13 |
|----------------------|--|----------------------|----------------|----------------------------|------------------------------|
| Tons (to) | 13 | 13 | 13 | 13 | 13 |
| Cutting length (cm) | 115 | 115 | 115 | 115 | 115 |
| Pump | single | - | single | single | single/single |
| Power supply | three-phase 400 V 6.6 kW | hydraulic tractor | PTO tractor | hydraulic + Elec. 400 V | PTO tractor + Elec. 400 V |
| Speed 1 (cm/s) | 7.4 | | 10.6 | */7.4 | 10.6/7.4 |
| Speed 2 (cm/s) | 20 | * | 26 | */20 | 26/20 |
| Return speed (cm/s) | 11.5 | | 18 | */11.5 | 18/11.5 |
| Oil capacity (L) | 28 | * | 28 | 28 | 28 |
| Pump output (L/min) | 28 | * | 45 | */28 | 45/28 |
| Dimension (HxLxW cm) | 262 (work position) / 200 (transport position) x 135 x 120 | | | | |
| Weight (kg) | 425 | 340 | 395 | 430 | 440 |

* Depending from tractor output

See all options & accessories page 32 & 33

Vertical splitter 17 Tons - V17 series

■ V17 series

This splitter has been improved in ergonomics, power and speeds, conform to safety standard EN609-1.

- Maximal safety for work
- 2-handed control
- Mechanical log-lift
- 115 cm opening
- Retractable cylinder for storage
- 2 speeds
- Brass guiding system with grease point
- Non-skid plate in full steel with angled edges
- Cast iron pump (on PTO)



VPF17



| Log splitter | VEL17 | VHY17 | VPF17 | VHE17 | VPE17 |
|----------------------|--|----------------------|----------------|----------------------------|------------------------------|
| Tons (to) | 17 | 17 | 17 | 17 | 17 |
| Cutting length (cm) | 115 | 115 | 115 | 115 | 115 |
| Pump | double | - | single | double | single/double |
| Power supply | three-phase 400 V 4,8 kW | hydraulic tractor | PTO tractor | hydraulic + Elec. 400 V | PTO tractor + Elec. 400 V |
| Speed 1 (cm/s) | 9.5 | | 11.8 | */9.5 | 11.8/9.5 |
| Speed 2 (cm/s) | 21 | * | 27.9 | */20.9 | 27.9/21 |
| Return speed (cm/s) | 14.2 | | 17.6 | */14.2 | 17.6/14.2 |
| Oil capacity (L) | 28 | * | 28 | 28 | 28 |
| Pump output (L/min) | 43 | * | 57 | */43 | 57/43 |
| Dimension (HxLxW cm) | 262 (work position) / 200 (transport position) x 135 x 120 | | | | |
| Weight (kg) | 445 | 360 | 420 | 450 | 465 |

* Depending from tractor output

See all options & accessories page 32 & 33

■ V22 series

This splitter has been improved in ergonomics, power and speeds, conform to safety standard EN609-1.

- Maximal safety for work
- 2-handed control
- Mechanical log-lift
- 115 cm opening
- Retractable cylinder for storage
- 2 speeds
- Brass guiding system with grease point
- Non-skid plate in full steel with angled edges
- Cast iron pump (on PTO)



Ø 100 cm
< 110 cm >



VPF22

| Log splitter | VEL22 | VHY22 | VPF22 | VHE22 | VPE22 |
|----------------------|--|----------------------|----------------|----------------------------|------------------------------|
| Tons (to) | 22 | 22 | 22 | 22 | 22 |
| Cutting length (cm) | 115 | 115 | 115 | 115 | 115 |
| Pump | double | - | single | double | single/double |
| Power supply | three-phase 400 V 6.6 kW | hydraulic tractor | PTO tractor | hydraulic + Elec. 400 V | PTO tractor + Elec. 400 V |
| Speed 1 (cm/s) | 8 | | 11.4 | */8 | 11.4/8 |
| Speed 2 (cm/s) | 24.8 | * | 23.3 | */24.8 | 23.3/24.8 |
| Return speed (cm/s) | 15.4 | | 17.1 | */15.4 | 17.1/15.4 |
| Oil capacity (L) | 62 | * | 62 | 62 | 62 |
| Pump output (L/min) | 58 | * | 69 | */58 | 69/58 |
| Dimension (HxLxW cm) | 264 (work position) / 202 (transport position) x 155 x 150 | | | | |
| Weight (kg) | 560 | 490 | 545 | 565 | 615 |

* Depending from tractor output

See all options & accessories page 32 & 33

Vertical splitter 27 Tons - V27 series

■ V27 series

This splitter has been improved in ergonomics, power and speeds, conform to safety standard EN609-1.

- Maximal safety for work
- 2-handed control
- Mechanical log-lift
- 115 cm opening
- Retractable cylinder for storage
- 2 speeds
- Brass guiding system with grease point
- Non-skid plate in full steel with angled edges
- Cast iron pump (on PTO)



∅ 100 cm
< 110 cm >



VPF27

| Log splitter | VEL27 | VPF27 | VPE27 |
|----------------------|--|----------------|------------------------------|
| Tons (to) | 27 | 27 | 27 |
| Cutting length (cm) | 115 | 115 | 115 |
| Pump | double | single | single/double |
| Power supply | three-phase 400 V 6.6 kW | PTO tractor | PTO tractor + Elec. 400 V |
| Speed 1 (cm/s) | 8 | 10.3 | 10.3/8 |
| Speed 2 (cm/s) | 16.2 | 30.4 | 30.4/16.2 |
| Return speed (cm/s) | 11.7 | 15.3 | 15.3/11.7 |
| Oil capacity (L) | 70 | 70 | 70 |
| Pump output (L/min) | 58 | 81 | 81/58 |
| Dimension (HxLxW cm) | 264 (work position) / 202 (transport position) x 155 x 150 | | |
| Weight (kg) | 615 | 600 | 670 |

See all options & accessories page 32 & 33

COMPLETE YOUR LOG SPLITTER BY ADDING FUNCTIONS

Accessories - V13/17/22/27 series



Mechanical log-lift
included



Hydraulic log-lift
(option)



Sapie
length 380 or 800 mm



Wheels and handling lever (3 wheels)
– 2 wheels only for VHY 13/17



Tachometer and hour meter
(for PTO)

Options and accessoires for V13/17/22/27 series can be assembled in the factory or afterwards with our kits.

If you order a log winch kit, please give us the model, year and if your splitter has already an Hydraulic log-lift.

If you order an oil cooler set, please tell us if you already have a log winch and/or a hydraulic log lift.

| | |
|--|---------------------|
| Transformation kit VHY13 to VPF13* | TRA00051 |
| Transformation kit VHY17 to VPF17* | TRA00052 |
| Transformation kit VPF22 to VPE22* | TRA00049 |
| Intermediate support for splitter and bundler V12/V27 | SUP000102 |
| Hydraulic log lift V13 / V17 | LBH001000 |
| Hydraulic log lift V22 / V27 | LBH002000 |
| Wheels and handling lever 12/13/16/17 (3 wheels) Cat.2 | RTM000202 |
| Wheels and handling lever 12/13/16/17 for VHY (2 wheels) Cat.2 | RTM000300 |
| Oil cooler set 12/13/16/17 (for intensive use recommended) | REF10000 |
| Oil cooler set 20/22/25/27 (for intensive use recommended) | REF10001 |
| PTO shaft typ 3 | CAR00001 |
| Tachometer and hour meter for PTO | COM000500 |
| Sapie 380 mm / 800 mm | SAP00001 / SAP00002 |

New Model

**COMPLETE YOUR LOG SPLITTER
BY ADDING FUNCTIONS**

Hydraulic log winch with
mechanical control
Logs until 600 kg
More information p.25



Hook & pliers 55 or 70 cm

Hydraulic log winch with remote
control. Logs until 600 kg
*More informations
p.25*



| | |
|--|-----------|
| Mechanical log winch V13/17 | TTB100001 |
| Mechanical log winch V22/27 | TTB200001 |
| Remote controlled log winch V13/17 | TTB100002 |
| Remote controlled log winch V22/27 | TTB200002 |
| Pliers for log winch 2 T opening 70 cm | PIN000300 |
| Pliers for log winch 1.5 T opening 55 cm | PIN000200 |
| Hook for log winch | CRO000100 |

16 Tons splitter on road homologated chassis - VMR





■ VMR series

VMR splitters are vertical on homologated chassis. They combine effectiveness and robustness, for great mobility and autonomy.

- Comfort : hydraulic tilting splitter in working position
- Handle and claw holding arm
- Safety : 2-handed control
- Two speeds
- Automatic knife return
- Brass guiding system
- Non-skid floor plate in full steel
- Road homologation according to directive 2007/46 / EC
- Electric start on diesel engine
- Sapie support



12 To \varnothing 70 cm
< 100 cm >



16 To \varnothing 80 cm
< 100 cm >

Spare wheel
(option)



VMR16ESS

| Log splitter | VMR12ESS SP | VMR12ESS DP | VMR12DIE SP | VMR12DIE DP | VMR16ESS-9 DP | VMR16ESS-13DP | VMR16DIE DP |
|---|--|-------------|-------------|-------------|---------------|---------------|-------------|
| Road homologation according to directive 2007/46 / EC (additional fee) | | | | | | | |
| Tons (to) | 12 | 12 | 12 | 12 | 16 | 16 | 16 |
| Cutting length (cm) | 108 | 108 | 108 | 108 | 108 | 108 | 108 |
| Pump | single | double | single | double | double | double | double |
| Power supply | Honda 9 HP | Honda 9 HP | Diesel 9 HP | Diesel 9 HP | Honda 9 HP | Honda 13 HP | Diesel 9 HP |
| Fuel capacity | 5.3 L | 5.3 L | 5.5 L | 5.5 L | 5.3 L | 6.1 L | 5.5 L |
| Speed 1 (cm/s) | 8 | 14 | 8 | 14 | 9 | 9 | 9 |
| Speed 2 (cm/s) | 20 | 25 | 20 | 25 | 19.7 | 19.7 | 19.7 |
| Return speed (cm/s) | 12 | 22 | 12 | 22 | 13.3 | 13.3 | 13.3 |
| Oil capacity (L) | 24 | 24 | 24 | 24 | 24 | 24 | 24 |
| Pump output (L/min) | 14 | 36.2 | 14 | 36.2 | 36.2 | 36.2 | 36.2 |
| Dimension (HxLxW cm) | transport : 186 x 126 x 295 / work : 250 x 126 x 287 | | | | | | |
| Weight (kg) | 520 | 520 | 530 | 530 | 560 | 570 | 570 |
| Electrical, PTO or combined driving. CONTACT US | Supplement for chassis with brake for parking | | | | | | |
| | Cross splitter 12/16 (FCX000100) | | | | | | |
| | Intermediate table 12 t / 16 t (TAB000101 / TAB000201) | | | | | | |
| | Hydraulic log-lift V12/16 for VMR (LBH000500) | | | | | | |
| | Mechanical log-lift V12/16 (LBM000100) | | | | | | |
| According to the standards, it's not allowed to use a winch on this kind of equipment | Spare wheel with support (SUP00011) | | | | | | |

Road homologated splitter 13/17 Tons - VMR series

NEW
VMR 13

■ VMR 13-17 series

VMR13-17 splitters are vertical and on a road-homologated chassis. They combine effectiveness and robustness and stand for great mobility and autonomy. Conform to the new safety standard EN609-1.



- Comfort : hydraulic tilting splitter in working position
- Safety : 2-handed control
- 2 splitting speeds
- Road homologation according to directive 2007/46 / EC
- Electric start on diesel engine
- 115 cm opening
- Adjustable claw to hold all logs (from 8cm)
- Log support arm with adjustable claw for wood and sapie support
- Mechanical log-lift included (really convenient)
- Non-skid plate in full steel with angled edges to facilitate timber handling
- Cylinder stroke retractable without tools



| Log splitter | VMR13ESS-9DP | VMR17ESS-9DP | VMR17ESS-13DP | VMR17DIE DP |
|---|--|-------------------|--------------------|-------------|
| Road homologation according to directive 2007/46 / EC (additional fee) | | | | |
| Tons (to) | 17 | 17 | 17 | 17 |
| Cutting length (cm) | 115 | 115 | 115 | 115 |
| Pump | DOUBLE | double | double | double |
| Power supply | petrol Honda 9 HP | petrol Honda 9 HP | petrol Honda 13 HP | Diesel 9 HP |
| Fuel capacity | 5.3 L | 5.3 L | 6.1 L | 5.5 L |
| Speed 1 (cm/s) | 9,5 | 9.1 | 9.1 | 9.1 |
| Speed 2 (cm/s) | 25,5 | 20.3 | 20.3 | 20.3 |
| Return speed (cm/s) | 15,2 | 12.8 | 12.8 | 12.8 |
| Oil capacity (L) | 24 | 24 | 24 | 24 |
| Pimp output (L/min) | 36.2 | 36.2 | 36.2 | 36.2 |
| Dimension (HxLxW cm) | transport : 195 x 126 x 303 / work : 260 x 126 x 318 | | | |
| Weight (kg) | 520 | 550 | 550 | 600 |
| According to the standards, it's not allowed to use a winch on this kind of equipment | Supplement for chassis with brake for parking | | | |
| | Hydraulic log-lift for V13/V17 for VMR(LBH001100) | | | |
| | Spare wheel with support (SUP00011) | | | |

NEW
VMRS 13

■ VMR-S series

Ensure freedom with this non-homologated road driving splitter !
A robust chassis and wheels expected for offroad. You are now ready to split offroad, with a quad for example.

- Mechanical tilting with winch included
- Petrol engine Vanguard 10 HP with double pump
- Cylinder stroke retractable without tools
- For robustness the steel beam is set into the floor plate and welded on both sides
- Safety : 2-handed control
- 2 splitting speeds
- Brass guiding system



like road homologated models



VMR-S16



VMR-S17



VMR-S13 and 17 fits to the safety standard EN609-1

- Opening : 115 cm
- Adjustable claw to hold all logs (from 8 cm)
- Log support arm with adjustable claw for wood and sapie support
- Mechanical log-lift included (really convenient)
- Non-skid plate in full steel with angled edges to facilitate timber handling

| Log splitter | VMR-S12 ESS DP | VMR-S16 ESS DP | VMR-S13 ESS DP | VMR-S17 ESS DP |
|----------------------------|--|-----------------------|-----------------------|-----------------------|
| Tons (to) | 12 | 16 | 13 | 17 |
| Cutting length (cm) | 108 | 108 | 115 | 115 |
| Pump | Double | Double | Double | Double |
| Power supply | petrol Vanguard 10 HP | petrol Vanguard 10 HP | petrol Vanguard 10 HP | petrol Vanguard 10 HP |
| Fuel capacity | 5.5 L | 5.5 L | 5.5 L | 5.5 L |
| Speed1 / 2 / return (cm/s) | 14.1 / 24.9 / 22.3 | 9.8 / 20.7 / 14.1 | 9,5 / 25,5 / 15,2 | 9.8 / 20.7 / 14.1 |
| Oil capacity (L) | 28 | 28 | 28 | 28 |
| Pumpe output (L/min) | 36.2 | 36.2 | 36,2 | 36.2 |
| Dimension (HxLxW cm) | transport : 190 x 120 x 214 / work : 250 (260 en 17To) x 120 x 218 | | | |
| Weight (kg) | 395 | 430 | 460 | 470 |

According to the standards, it's not allowed to use a winch on this kind of equipment

Hydraulic log-lift V12/V16 VMR (LBH000400)

Hydraulic log-lift V13/V17 VMR (LBH002000)

Mechanical log-lift (only on 12/16 t / already included on 17 t) (LBM000100)

Intermediate table (only on 12/16 t) (TAB000101/201)

Cross splitter (only on 12/16 t) (FCX000100)

Crane splitter 25 Tons - HHY25 Model

■ HHY25 model

Crane splitter with a 25 Tons power and 110 cm opening. This convenient splitter can be installed on front loader or forest crane.

- Retractable cylinder without tools
- Brass guiding system
- Robust and durable
- Recommended flow :
60 L/min

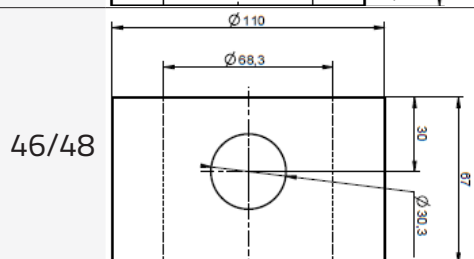
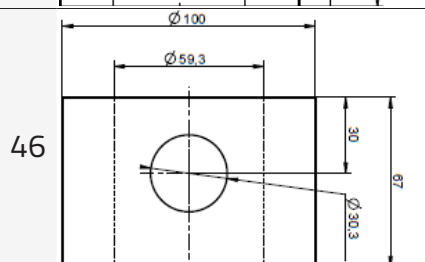
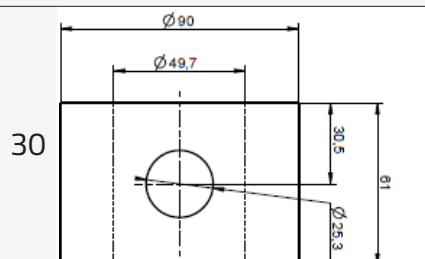


Ø 100 cm
< 100 cm >



| Log splitter | HHY25 GRUE |
|--|--|
| Tons (to) | 25 |
| Opening / cylinder stroke (cm) | 110 / 100 |
| Power supply | hydraulic tractor |
| Speeds depends on the tractor oil flow | |
| Dimension (HxPxW cm) | 60 x 65 x 198 (transport) / 258 (work) |
| Weight (kg) | 400 |
| Linkage for EURO front loader (ATT10003) | |
| Linkage for rotator 30 (ATT10000) | |
| Linkage for rotator 46 (ATT10001) | |
| Linkage for rotator 46/48 (ATT10002) | |

Linkage for rotator :



Horizontal Log splitters



Horizontal Log splitter 17 Tons- Model HPF17

1

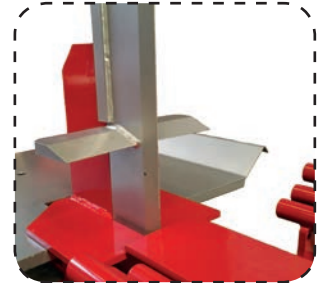
NEW
HPF17

■ Log splitter H17 - 17 Tons

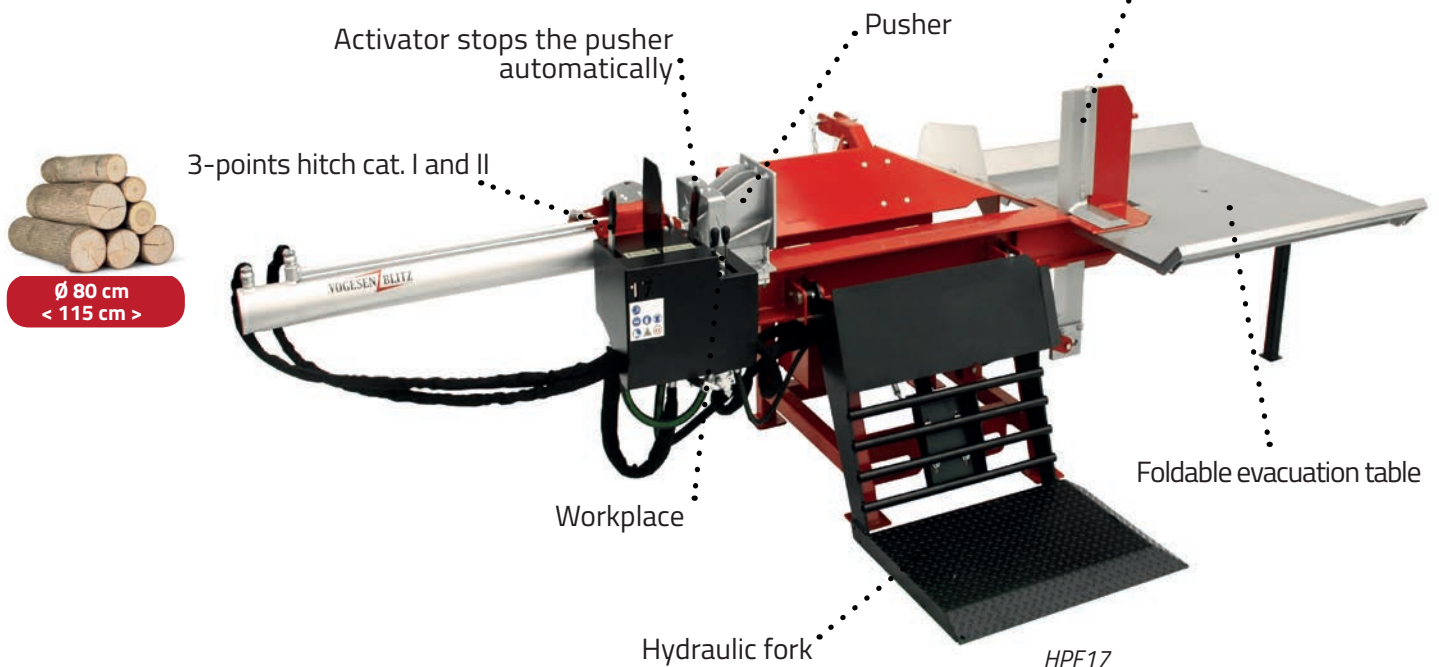
This machine has been designed for professionals to create an efficient workplace which allows comfort, safety and high efficiency.

Work comfort: lifting fork and large evacuation table

- 2/4 splinter knife, hydraulically adjustable
- 2 Hand control with 2 splitting speed
- Easy to move: foldable table and cylinder
- Cutting length: 115 cm
- Power supply: PTO tractor



2/4 splinter knife, hydraulically adjustable



| Log splitter | HPF17 |
|-------------------------------|--|
| Tons (to) | 17 |
| Cutting length(cm) | 115 |
| Pump | Cast iron pump |
| Power supply | PTO |
| Speeds 1 / 2 / returns (cm/s) | 11,8 / 27,9 / 17,6 |
| Oil capacity(L) | 28 |
| Pump outup (l/min) | 57 |
| Dimensions (HxLxW cm) | Work: 113x174x380 Transport : 158x163x220 |
| Weight (kg) | 625 |

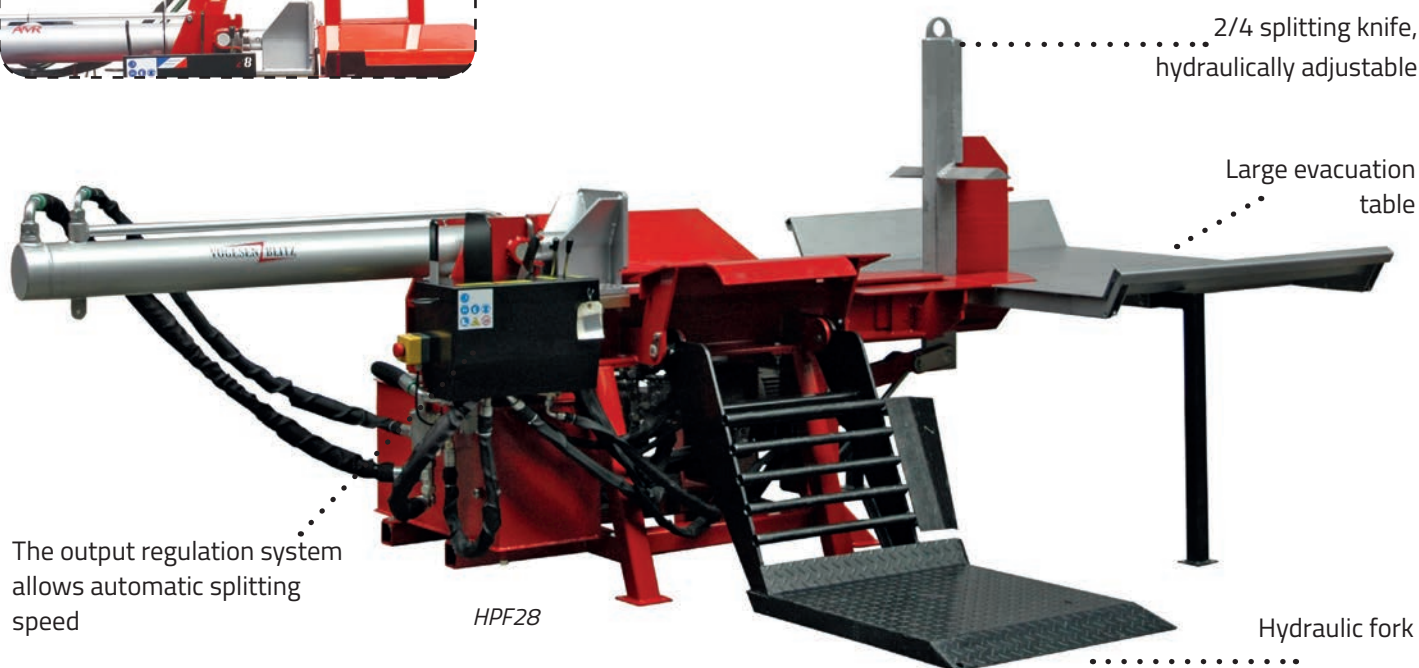


Hydraulic log winch with remote control for H28. This option can be assembled in the factory or afterwards with our kits.

- Traction power : 600 kg
- Cable : 20 M length Ø 6 mm
- Cable average speed : 0.5 m / s
- 12 V and hydraulic from tractor required



Ø 110 cm
< 120 cm >



| Log splitter | HPF28 | HEL28 | HPE28 |
|------------------------|--|-----------------------------|------------------------------|
| Tons (to) | 28 | 28 | 28 |
| Cutting length (cm) | 120 | 120 | 120 |
| Pump | double | triple | double/triple |
| Power supply | PTO tractor | three-phase 400 V 9.2 kW | PTO tractor + Elec. 400 V |
| Automatic speed (cm/s) | 24 | 22.7 | 24 / 22.7 |
| Retun speed (cm/s) | 21.8 | 16.2 | 21.8 / 16.2 |
| Oil capacity (L) | 85 | 85 | 85 |
| Pump output (L/min) | 89 | 87.8 | 89 / 87.8 |
| Dimension (HxLxW cm) | transport : 194 x 178 x 325 / work : 133 x 226 x 405 | | |
| Weight(kg) | 1005 | 1069 | 1075 |

Log winch can be assembled in the factory or afterwards with our kits.
Tractor with double effect valve required

6 - way splitting knife (FCX001001)

Log winch with remote control for 28 T (TTB000301)

PTO shaft type 3 (CAR00001)

Horizontal splitter 28 Tons on axle - H28 ESS series

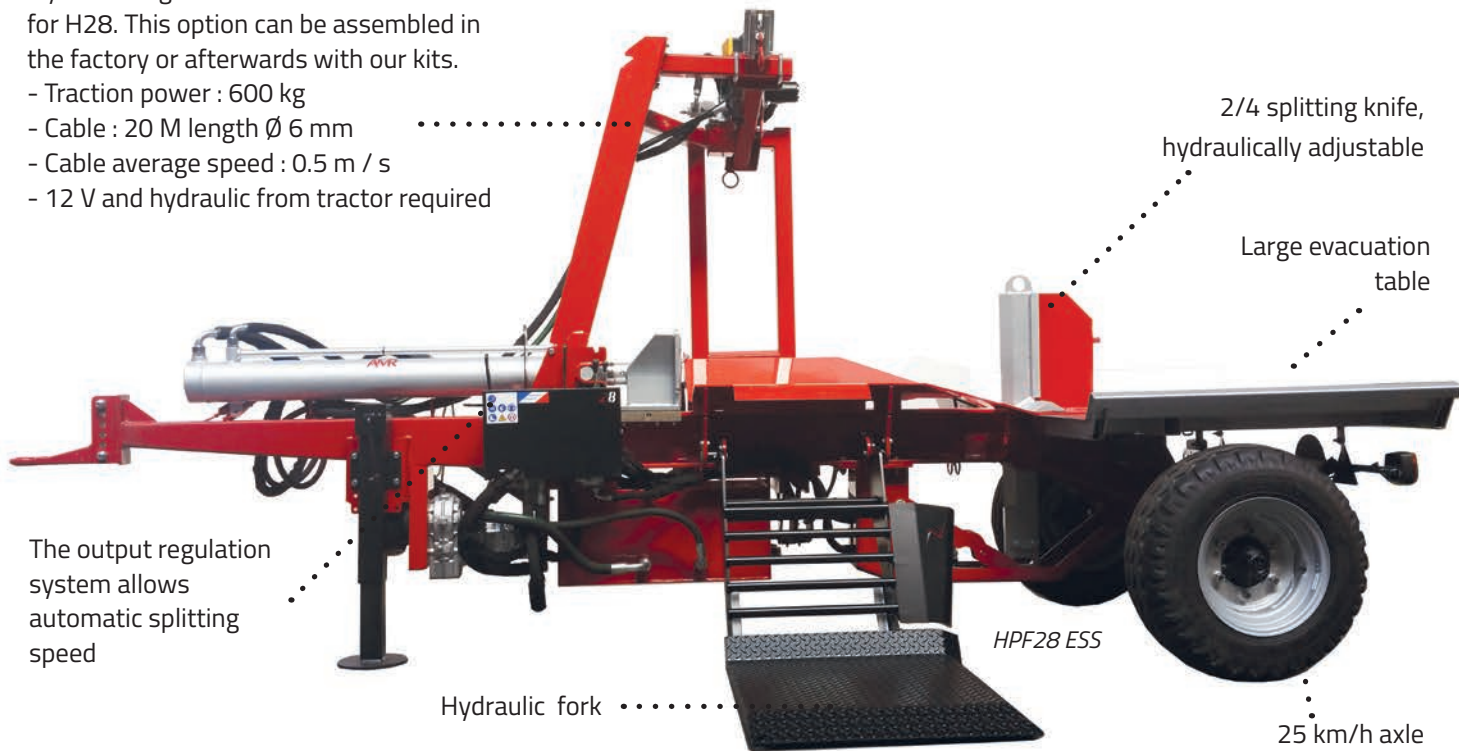


Ø 110 cm
< 120 cm >



Hydraulic log winch with remote control for H28. This option can be assembled in the factory or afterwards with our kits.

- Traction power : 600 kg
- Cable : 20 M length Ø 6 mm
- Cable average speed : 0.5 m / s
- 12 V and hydraulic from tractor required



| Log splitter | HPF28 ESS | HPE28 ESS |
|------------------------|-----------------|---------------------------|
| Tons (to) | 28 | 28 |
| Cutting length (cm) | 120 | 120 |
| Pump | double | double/triple |
| Power supply | PTO tractor | PTO tractor + Elec. 400 V |
| Automatic speed (cm/s) | 24 | 24 / 22.7 |
| Return speed (cm/s) | 21.8 | 21.8 / 16.2 |
| Oil capacity (L) | 85 | 85 |
| Pump output (L/min) | 89 | 89 / 87.8 |
| Dimension (HxLxW cm) | 194 x 190 x 473 | 194 x 190 x 473 |
| Weight (kg) | 1150 | 1330 |

| | |
|--|--|
| <p>Log winch can be assembled in the factory or afterwards with our kits. Tractor with double effect valve required</p> | 6 - way splitting knife (FCX001001) |
| | Log winch with remote control for 28 T on axle (TTB000300) |
| | PTO shaft, specific fot 28 T on axle (CAR00015) |

■ H1100 series

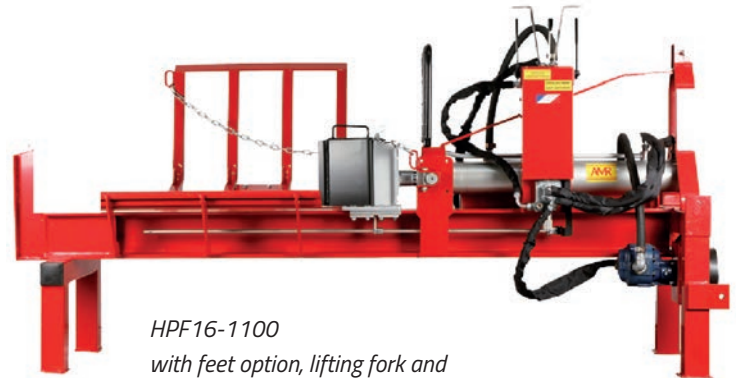
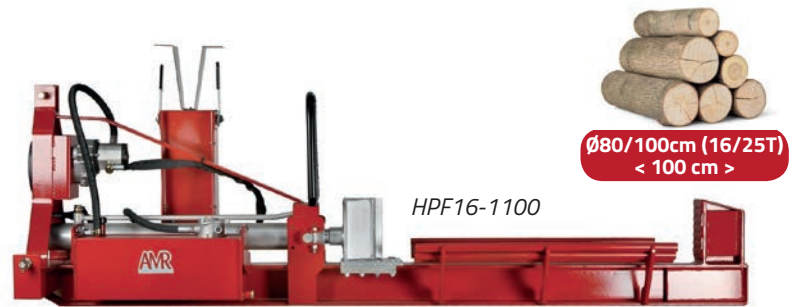
Ideal for post splitting, this horizontal splitter is available in 16 or 25 tons version, with a 110 cm opening.

- Safety : 2-handed control
- Cylinder stroke : 100 cm
- 2 splitting speeds
- Brass guiding system
- 3-points hitch cat. I and II (PTO)



HES16-1100

Autonomous model on axle with fork (option) and hitch. Road driving not homologated.



HPF16-1100
with feet option, lifting fork and
reversible split system

- Reversible split system for splitters 25 tons not available
- Cross splitter on 25 tons not recommended

| Log splitter | HHY16-1100 | HPF16-1100 | HEL16-1100 | HES16-1100 | HPF25-1100 | HEL25-1100 |
|--------------------------|-------------------|-------------|-------------------|-------------------|-------------|-------------------|
| Optional : fork and feet | | | | | | |
| Tons (to) | 16 | 16 | 16 | 16 | 25 | 25 |
| Cutting length (cm) | 110 | 110 | 110 | 110 | 110 | 110 |
| Pump | - | single | double | double | single | double |
| Power supply | hydraulic tractor | PTO tractor | three-phase 400 V | petrol Honda 9 HP | PTO tractor | three-phase 400 V |
| Speed 1 (cm/s) | | 10.6 | 9.5 | 8.7 | 10.1 | 8.2 |
| Speed 2 (cm/s) | * | 27.8 | 20.9 | 18.1 | 30.3 | 16.2 |
| Return speed (cm/s) | | 16 | 14.2 | 11.3 | 14.9 | 11.7 |
| Oil capacity (L) | * | 28 | 28 | 28 | 50 | 50 |
| Pump output (L/min) | * | 54 | 42 | 42 | 70 | 52 |
| Weight (kg) | 250 | 310 | 310 | 470 | 450 | 530 |

CUSTOM-MADE POSSIBLE

Cylinder length and specific opening on demand (according to regulation and possibility). For example : 160 or 210 cm opening. Combined drive on demand.

CONTACT US

Supplement for hydraulic fork with speed regulation and feet

Supplement for feet without fork

PTO shaft type 3 (CAR00001)

Cross splitter for 16 t (FCX000100)

Supplement for reversible split system (only on 16 t)

* Depending from tractor output

Kindlet, kindling machine

Performance, quality and time saving provided with Kindlet 200 and Kindlet Pro kindling machines. Machines for sticks production for firewood. Every 1.2 seconds (Pro model) the 5t powered splitting blade cuts kindling wood ready for use.

Fastest cycle time on the market !

- Power : 4 and 5 tons
- Yield : 80 to 150 bags / hour
- Oil cooler included (PRO model)

Wood to use

| | Kindlet PRO | Kindlet 200 |
|---------------------------------------|--|-------------|
| Ø max. of wood (cm) | 25 | 20 |
| Length as standard (cm) | 15 / 20 | 15 |
| Length kit in option (cm) | 25 or 29 | - |
| Type of wood recommended : | Resinoux (pine) - birch - not stringy wood | |
| Type of wood not recommended : | knotty wood / wood pallet / timber drop | |



Kindlet PRO with 3 sack Rotabagga



Kindlet 200 with standard conveyor

| Kindling machine | KINDLET 200 M | KINDLET 200 T | KINDLET 200 PDF | KINDLET PRO T | KINDLET PRO PDF |
|--------------------------------|---|---------------------------|-----------------|------------------------------------|------------------------------------|
| Length kit as standard (cm) | 15 | 15 | 15 | standard : 20 option : 15/25/29 | standard : 20 option : 15/25/29 |
| Tons (to) | 4 | 4 | 4 | 5 | 5 |
| Cycle time (s) | 2 | 2 | 2 | 1.2 (length 15 cm) | 1.2 (length 15 cm) |
| Output max. (sack 24 L / hour) | 80 | 80 | 80 | 150 | 150 |
| Power supply | single-phased 230 V 2.2 kW | three-phase 400 V 3 kW | PTO tractor | three-phase 400 V 7.5 kW | PTO tractor |
| Supply conveyor (cm) | 130 | 130 | 130 | 230 | 230 |
| Evacuation conveyor (cm) | 120 | 120 | 120 | 220 | 220 |
| Dimension (HxLxW cm) | Kindlet 200 : 128 x 110 x 240 / Kindlet Pro : 140 x 140 x 280 | | | | |
| Weight (kg) | 400 | 400 | 400 | 700 | 700 |

TRANSFORMATION KIT

- > Kindlet 200 available only with 15 cm kit.
- > Kindlet PRO with 20 cm kit as standard. Optional kits available : 15, 25 and 29 cm.

Rotabagga (for 3 bag 40 L) (NEG00298) Kindlet 200

Rotabagga-Absacksystem (Bags 40L) (NEG00299) Kindlet PRO

3 kits for Kindlet Pro in option : 15, 25 and 29 cm (Ref. KIT)
(kit contains : 15/25 cm = band + stop / 29 cm = band)

Bag 24 L - 500, 1000 or 2000 pieces (FIL000124) with zipper

Bag 40 L - 500, 1000 or 2000 pieces (FIL000140) with zipper

SAWING RANGE

QUATRO MAT



Video on
www.a.m.r.fr





AUTOMATIC SAWING

HIGH OUTPUT!

Standard EN 1870-6



NEW

5m conveyor with individual sections.
Double acting hydraulic cylinder

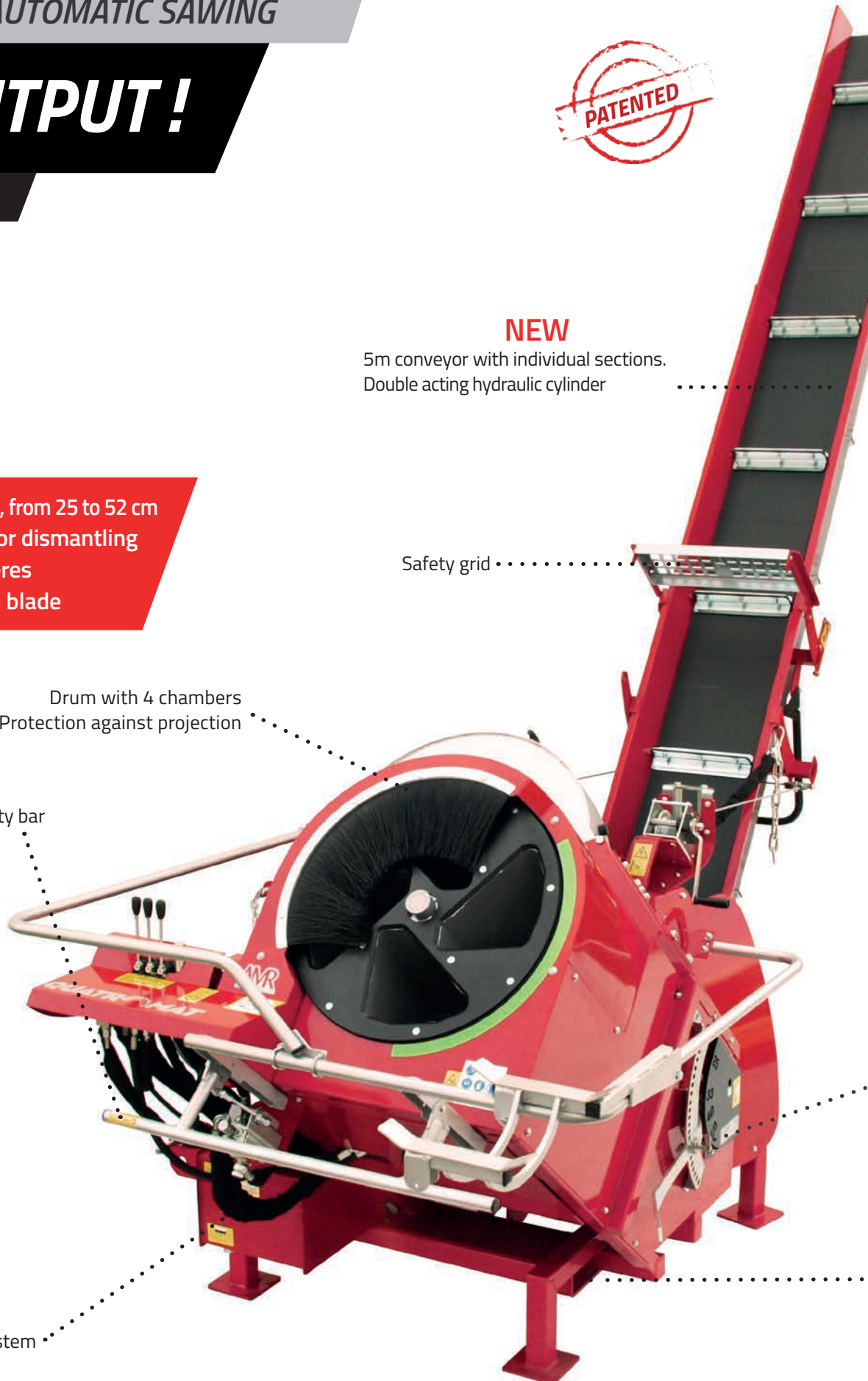
- Comfort : cut length adjustable, from 25 to 52 cm
25 to 52 cm without tools or dismantling
- Capacity / hour : 10-14 steres
- Safety : no direct access to blade

Safety grid

Drum with 4 chambers
Protection against projection

Drum safety bar

Hydraulic independent system

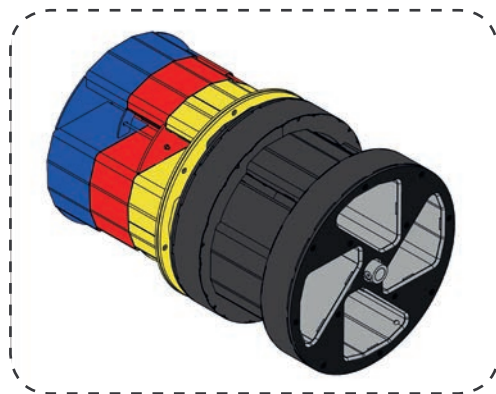


More than 1700 Quatromat drum saws on the market !

With our automatic drum saw with 4 chambers, we enable you to cut extremely fast with high performance and maximum safety.

The great advantage of our drum saw is that the cutting length of 25 - 52 cm can be adjusted in seconds without tools and without removing the drum.

with the inclination of the drum, the wood is automatically fed. It is not necessary to push and hold the wood.



A drum in 3 parts

The internal part is made up of 3 telescopic parts in order to guide the wood along the drum



European Patent

Cut length adjustable from 25 to 52 cm without tools and dismantling

..... Loading assistance for fork lift

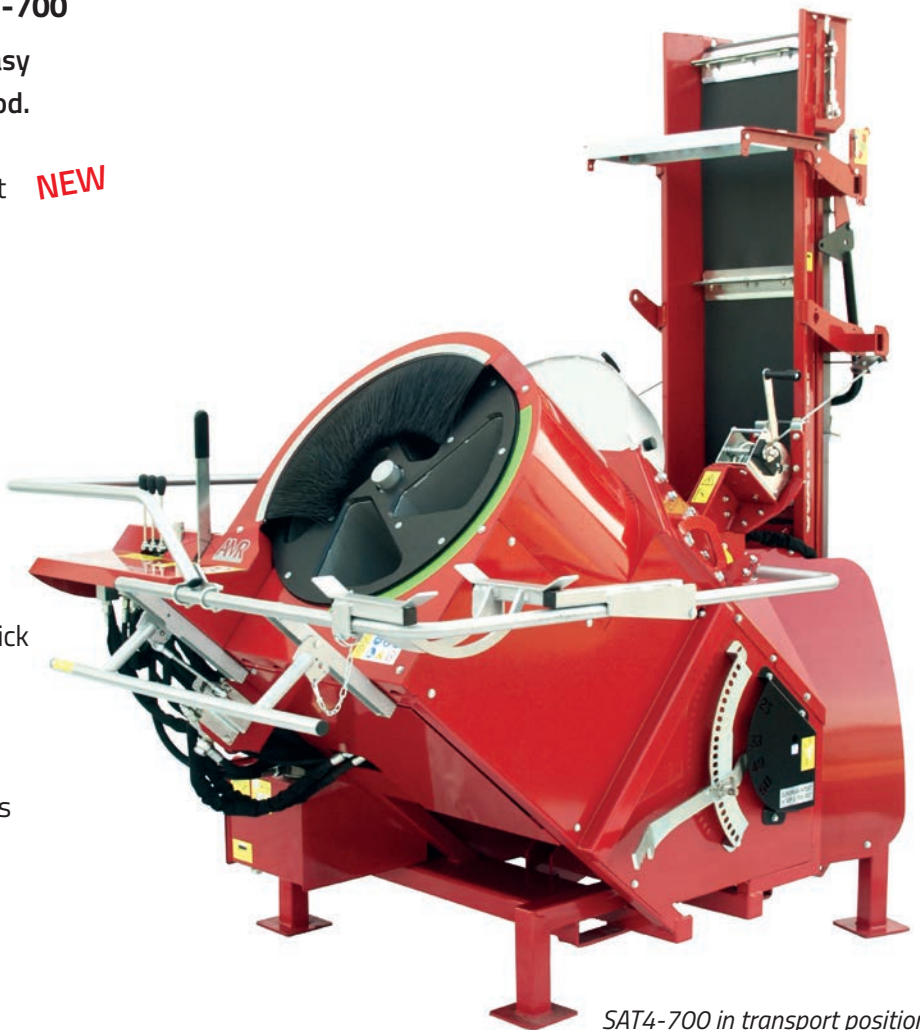




■ Automatic saw Quatromat - SAT4-700

The Quatromat circular saw allows the easy and quick sawing of round or splitted wood.

- double-acting cylinder on the conveyor belt **NEW**
- a drive clutch for the saw blade **NEW** with Emergency stop.
- Cutting capacity : until 10-14 steres/hr
- Cut length adjustable from 25 to 52 cm without tools and dismantling
- 5 m x 35 cm belt with hydraulic drive
- Safety grid
- Drum rotational speed and conveyor speed adjustable
- Specific TCT blade, 700 mm x 6/4.5 mm thick
- Safety : no direct access to blade
- Wood disposal support included
- Torque limiter included
- Suitable for tractors from 35 HP upwards



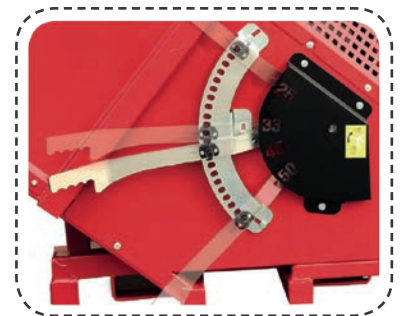
SAT4-700 in transport position



The blade is fully protected for safety but easily accessible for change

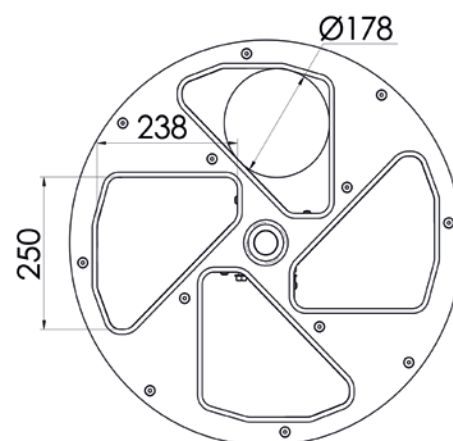
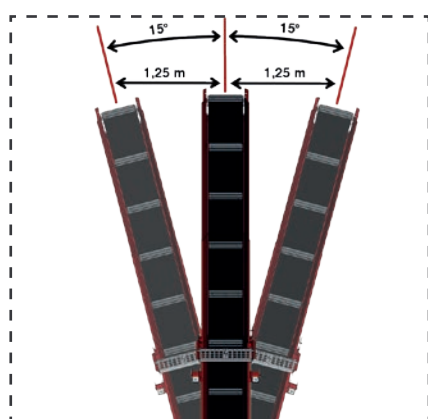


Log grip system locks the wood while sawing.



Cut length adjustable from 25 to 52 cm, without tools and dismantling.

| | | |
|--|--|-------------------|
| SAT4-700-PTH | PTO | 878 kg |
| SAT4-700-PETH | PTO + Elec. 400 V 9.2 kW combined | 955 kg |
| SAT4-700-PTHO | PTO, orientable conveyor | 887kg |
| SAT4-700-PETHO | PTO + Elec. combined, orientable conveyor | 940 kg |
| Number of chambers | | 4 |
| Length of wood (m) | | until 1 |
| Max. Ø round log / split log (cm) | | 16 / 24 |
| Max. cut / min | | 60 |
| Cutting length (cm) | 25, 33, 50 + intermediate or 20 to 40 + intermediate (on demand) | |
| Pump | | 14 L with 540 rpm |
| TCT blade Ø 700 mm | | 6.0/4.5 Ø30 mm |
| Conveyor length (m) / Max high of evacuation (m) | | 5 / 3 |
| 3-point tractor | | Cat. I et II |
| Dimension of transport (HxLxW cm) | | 245 x 210 x 160 |
| Transport axle with lighting ramp (280 kg) (Option) | | |
| TCT blade Ø700 mm x 6.0/4.5 Ø30 mm z=42 (LAM00032) | | |
| Lighting ramp (RAM00100) | | |
| Tachometer and hour meter (COM000300) | | |
| PTO shaft type 3 (CAR00001) | | |
| PTO shaft type 3 (CAR00015) - Model with transport axle | | |



The conveyor orientation setting makes easy loading wood in a trailer.
Easy setting with central lever, that can be driven directly from operating place.



NEW TRIOMAT

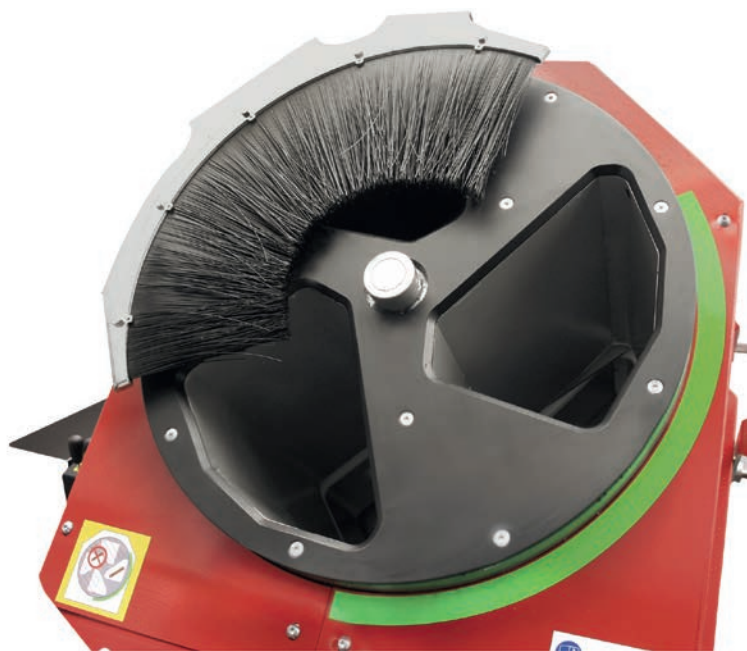
■ Automatic saw Triomat - SAT3-700

The new automatic drum saw with 3 channels enables you to cut extremely fast with enormously high performance and maximum safety.

This model was specially designed for bigger wood sizes

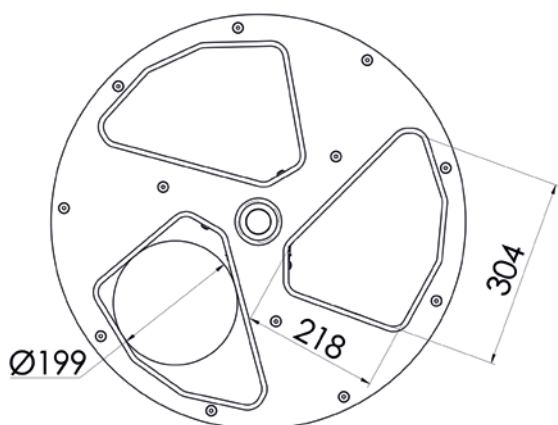
- double-acting cylinder on the conveyor belt
- a drive clutch for the saw blade with Emergency stop.
- Cutting capacity : until 7.5-10.5 steres/hr
- Cut length adjustable from 25 to 52 cm without tools and dismantling
- 5 m x 35 cm belt with hydraulic on drive
- Safety grid
- Drum rotational speed and conveyor speed adjustable
- Specific TCT blade, 700 mm x 6/4.5 mm thick
- Safety : no direct access to blade
- Wood disposal support included
- Torque limiter included
- Suitable for tractors from 35 HP upwards

NEW **NEW**



| SAT3-700-PTH | PTO |
|--|--|
| SAT3-700-PETH | PTO + Elec. 400 V 9,2 kW combined |
| SAT3-700-PTHO | PTO, orientable conveyor |
| SAT3-700-PETHO | PTO + Elec. combined, orientable conveyor |
| Number of chambers | 3 |
| Length of wood (m) | 1 |
| Max.Ø round log / split log (cm) | 19 /30 |
| Max.cut / min | 45 |
| Cutting length (cm) | 25, 33, 52 + intermediate |
| Pump | 14 L with 540 rpm |
| TCT blade Ø 700 mm | 6.0/4.5/ Ø30mm |
| Conveyor length (m) / Max height of evacuation (m) | 5/3 |
| 3-point tractor | cat. I and II |
| Dimension of transport (H x L x W) | 245 x 220 x 160 |
| Weight | SAT3 - 700 PTH : 878 Kg SAT3 - 700 PETH : 955 Kg SAT3 - 700 PTH-TO : 887 Kg SAT3 - 700 PETH-TO : 968 Kg |

Transformation kit from Quatromat to Triomat (TRA00200)





Quatromat with axle

Axle carrier with lighting (280 kg) * (POR000200 For serial number 1 to 1020, without orientable conveyor)

Axle carrier with lighting (280 kg) * (POR000201 For serial number 1021 and more, without orientable conveyor)

Lighting (RAM00100)

PTO Type 3 (CAR00015) - Model with axle

** Specify model and serial number of the machine when ordering.*

SOL  **MAT**







SEMI-AUTOMATIC SAWING - with mechanic log carriage

MAXIMUM EFFICIENCY & WORKING COMFORT!

Standard EN 1870-6

- Cutting capacity : until 7 steres/hr
- high quality carbide blade
- Suitable for tractors from 35 HP upwards
- Emergency-stop lever for PTO drive
- Saw blade easily accessible
- Hydraulic independent system
- Incredibly safe: No direct access to the saw blade



Ajustable conveyor speed

Conveyor available
in 2 or 5 m with
individual sections
Option : orientable,
model 5m only

Safety grid

Tilting system

Cutting length adjustable
from 20 to 52 cm

Wood disposal support

Loading assistance for fork lift

■ Conveyor 2 m

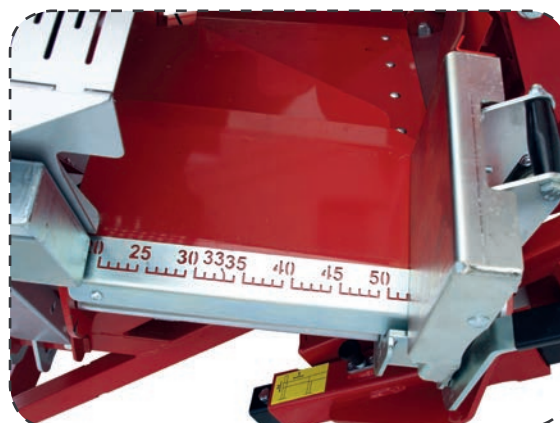
Mechanically tensioned telescopic discharge conveyor belt with adjustable speed.

Width of the conveyor: 35cm

■ Conveyor 5 m (option orientable)

Hydraulically tensioned telescopic discharge conveyor belt with adjustable speed.

Width of the conveyor: 35cm



Setting the cutting length of 20-52 cm with a notch lever



Log grip system locks the wood while sawing

| Solomat | SIT-700E | SIT-700P | SIT-700PE |
|--|----------------------------|-------------|-------------------|
| With mecanic log carriage and conveyor 2 m | | | |
| With mecanic log carriage and conveyor 5 m | | | |
| With mecanic log carriage and orientable conveyor 5 m NEW | | | |
| Power supply | three-phase 7.5 kW 400V | PTO tractor | PTO + Elec. 400 V |
| Ø Wood mini / maxi | 50/220mm | 50/220mm | 50/220mm |
| Max. conveyor evacuation height (5m conveyor = 3m / 2m conveyor = 1.45m) | | | |
| Weight with 2m conveyor | 480Kg | 525kg | 585Kg |
| Weight with 5 m conveyor | 545Kg | 630Kg | 680Kg |
| TCT blade Ø 700 mm x 5,0/4,0 mm (LAM00039) | | | |
| Tachometer and hour meter (COM000400) | | | |
| PTO shaft Type 3 (CAR00001) | | | |
| * KIT for converting a mechanical log carriage into a hydraulic log carriage | | | |

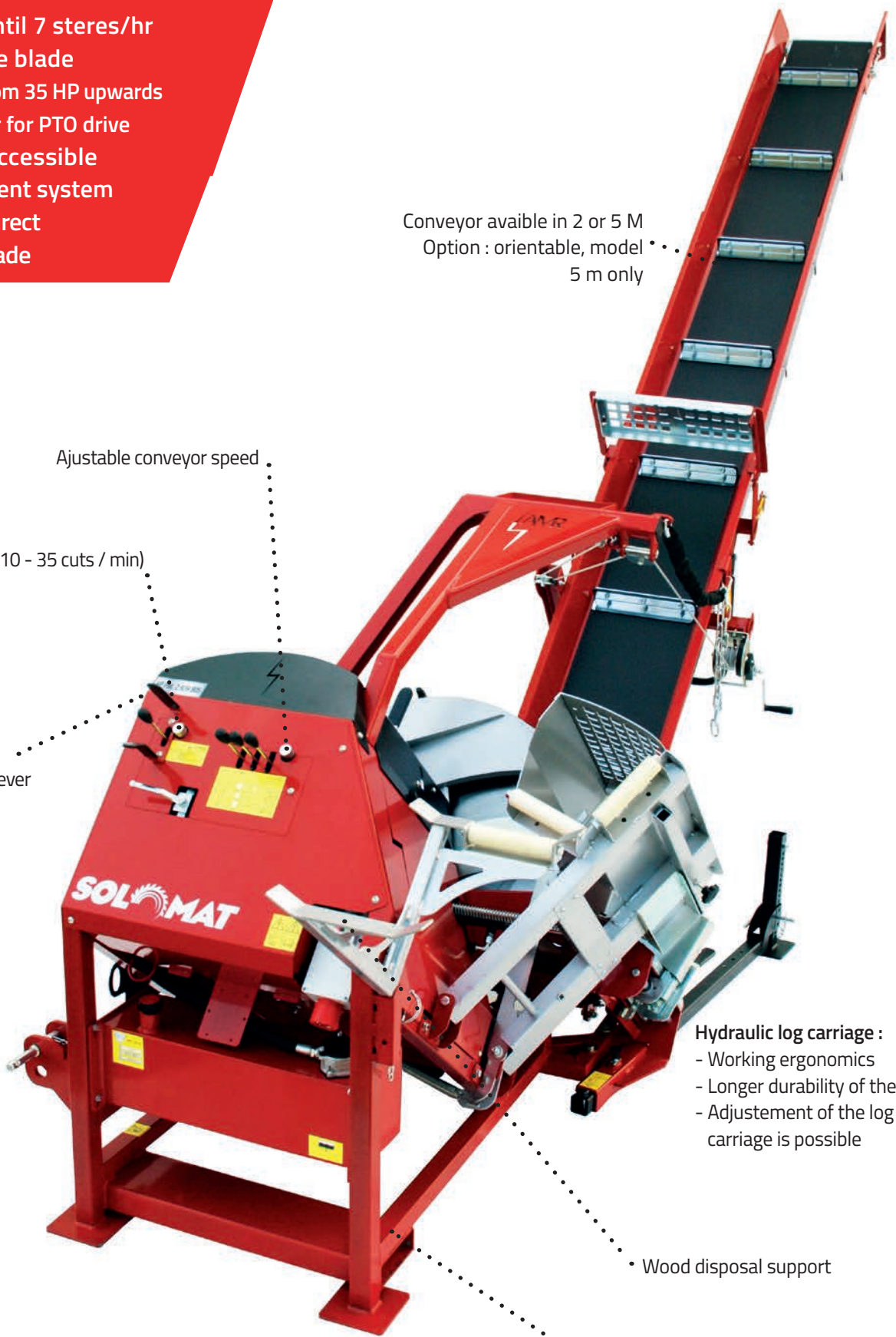
* Specify model and serial number of the machine when ordering.



SEMI-AUTOMATIC SAWING - with hydraulic log carriage

- Cutting capacity : until 7 steres/hr
- high quality carbide blade
- Suitable for tractors from 35 HP upwards
- Emergency-stop lever for PTO drive
- Saw blade easily accessible
- Hydraulic independent system
- Incredibly safe: No direct access to the saw blade

Conveyor available in 2 or 5 M
 Option : orientable, model
 5 m only



Ajustable conveyor speed

speed regulation (10 - 35 cuts / min)

The log carriage is activated by a lever

Hydraulic log carriage :

- Working ergonomics
- Longer durability of the blade
- Adjustment of the log carriage is possible

• Wood disposal support

• Loading assistance for fork lif

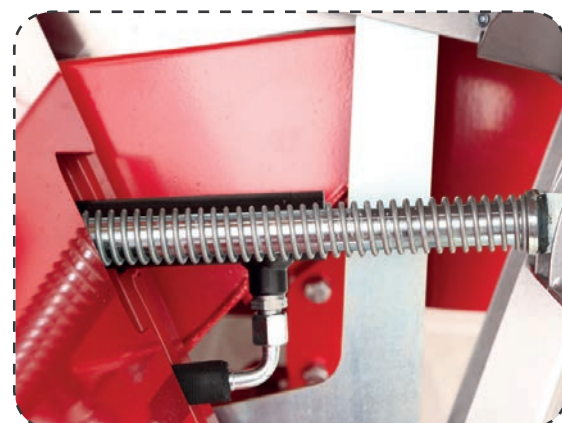
■ Conveyor 5 m (option : orientable)

Hydraulically tensioned telescopic discharge conveyor belt with adjustable speed.

Width of the conveyor: 35cm



Valve and speed regulation for log carriage



Hydraulic log carriage system

| Solomat | SIT-700E | SIT-700P | SIT-700PE |
|---|----------------------------|-------------|-------------------|
| With hydraulic log carriage and conveyor 5 m | | | |
| With hydraulic log carriage and orientable conveyor 5 m NEW | | | |
| Power supply | three-phase 7.5 kW 400V | PTO tractor | PTO + Elec. 400 V |
| Ø Wood mini / maxi | 50/220mm | 50/220mm | 50/220mm |
| Max. conveyor evacuation height (5m conveyor = 3m / 2m conveyor = 1.45m) | | | |
| Saw blade HM. Ø 700/30 x 5,0/4,0 mm, 42 teeth | serially | serially | serially |
| Weight with 5 m conveyor | 545Kg | 630Kg | 680Kg |
| TCT blade Ø 700 mm x 5,0/4,0 mm (LAM00039) | | | |
| Tachometer and hour meter (COM00400) | | | |
| PTO shaft Type 3 (CAR00001) | | | |

* Specify model and serial number of the machine when ordering.

■ Circular log carriage saw with conveyor - ST700 series

Comfort and efficiency.

- Cutting length adjustable from 20 to 50 cm
- 4 m evacuation conveyor
- Conveyor deployment and speed adjusted hydraulically
- Conveyor with 1 m sections
- Conveyor controls with pressure release valve
- Stabilization stand



| Circular tilting saw with conveyor | ST700-H | ST700-P |
|---|--|--|
| Power supply Direct transmission | Hydraulic Blade driving by PTO shaft /conveyor by hydraulic | PTO Blade and conveyor driving by PTO shaft. The saw is fit with a pump |
| Serial TCT blade (Ø and boring in mm) | Ø 700 / 30 | Ø 700 / 30 |
| Ø max. round log or split log (cm) | 26 | 26 |
| Length of wood (cm) | 100 | 100 |
| Dimension in cm (HxLxW vertical) | transport: 180 x 240 x 150 | |
| Weight (kg) | 450 | 450 |
| Spare TCT blade Ø 700 mm (LAM00011) | | |
| PTO shaft type 3 (CAR00001) | | |
| Tilting extension ST700 (RAL00003) | | |
| Evacuation conveyor without saw (tractor with single effect valve and free return) (BTR4000H) | | |

Circular log carriage saw- WSA series

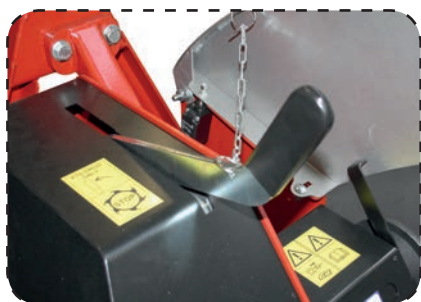
■ Circular log carriage saw- WSA series

Saw safely with WSA!

This ultra-robust circular log carriage saw meets the European standard EN 1870-6. Ergonomics and easiness to move give optimum work comfort.



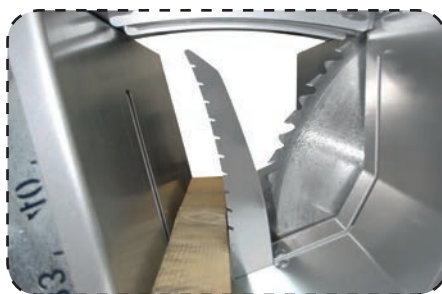
WSA-700PE



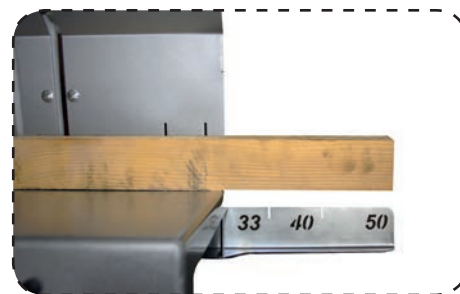
Emergency stop lever at PTO



Covered blade easy to access



Log grip system locks the wood while sawing



Cutting length indicator

■ Circular log carriage saw- WSA series

>Safety

- Fully covered log carriage
- Emergency stop lever at PTO
- Interlock on blade cover on every model (open hood = blade stops)
- Standard EN 1870-6

>Robustness

- Welded and reinforced chassis

>Ergonomics

- Gripper holds the wood while sawing
- 3 wheels and handles for easy moving
- Rotational handle for easy cutting process
- Allows several logs to be sawn in same time (when total diameter is under limit)
- Cutting length indicator included
- 3-point hitch for tractor (P and PE models)



WSA-700E



Belt driven

| Circular log carriage saw | WSA-700E | WSA-700P | WSA-700PE |
|--|--|----------------|------------------------------------|
| Power supply | three-phase 400 V 7.5 kW | PTO tractor | three-phase 400 V + PTO tractor |
| Serial TCT blade Ø and boring (mm) | Ø 700/30 | Ø 700/30 | Ø 700/30 |
| Ø max. round or split log (cm) | 24 | 24 | 24 |
| Length of wood (cm) | 100 | 100 | 100 |
| Dimension in cm (HxLxW vertical) | transport : 113 x 120 x 81 / work : 113 x 150 x 81 | | |
| Weight (kg) | 163 | 192 | 238 |
| Spare TCT blade Ø 700/30 mm (LAM00011) | | | |
| PTO shaft type 3 (CAR00001) | | | |

NEW
WSA 700 Ess

■ Gasoline circular log carriage saw - WSA -700

>Safety

- Covered log carriage
- Emergency stop lever
- Standard EN 1870-6

>Robustness

- Welded and reinforced chassis

>Ergonomics

- Chassis with third wheel and drawbar
- Rolling handle for easier operation
- There can be several pieces of wood must be inserted (Max. Wood diameter must not exceed be exceeded)
- Adjustable length indicator



WSA-700 ess



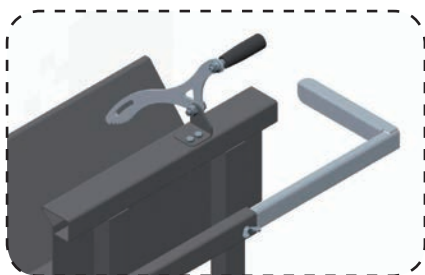
Belt driven

| Circular log carriage saw | WSA-700 Ess |
|---------------------------------------|--------------------------------|
| Power supply | Briggs und Stratton EssOHV 9cv |
| Serial TCT blade Ø and boring (mm) | Ø 700/30 |
| Ø max. round or split log (cm) | 24 |
| Length of wood (cm) | 100 |
| Dimension in cm (HxLxW vertical) | 110 x 83 x 102 |
| Weight (kg) | 180 |
| TCT blade Ø 700/30 mm (LAM00011) | |

■ Circular log carriage saw - KWS

With their blades from 550 and 600 mm, KWS saws work with robustness and comfort.

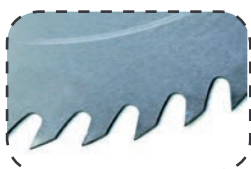
- Robust building : frame with welded tubes
- Easy to use with stable frame and large wheels
- Chrome or TCT blade included
- Powder coated
- Transport handle
- Serial cutting length indicator
- Serial grip handle
- Option tilting extension
- TCT Blade on model 550



Serial cutting length indicator and grip handle



TCT blade



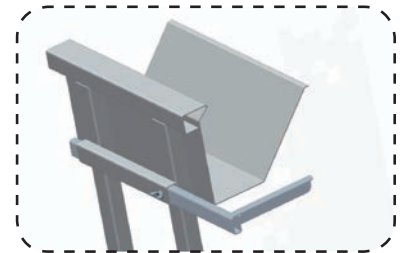
Chrome blade

| Circular log carriage saw with chrome blade with TCT blade | KWS 550 TCT | KWS 600 |
|--|---------------|--------------|
| Power supply | single-phased | three-phase |
| Direct transmission | 230 V 3 kW | 400 V 4.2 kW |
| Blade Ø and boring (mm) | Ø 550 / 30 | Ø 600 / 30 |
| Blade rotation (t/min) | 2810 | 1450 |
| Height of work (cm) | 70 | 70 |
| Cut per turn (cm) | 20 | 22 |
| Weight (kg) | 88 | 88 |
| TCT blade Ø 550 mm or Ø 600 mm (LAM00005/LAM00007) | | |
| Chrome blade Ø 600 mm (LAM00006) | | |
| Tilting extension for KWS 550/600 and WKS 650/700 (RAL00005) | | |
| 400 V female plug (PRI00002) | | |

■ Circular log carriage saw - WKS series

With their blades from 650 and 700 mm, WKS saws work with robustness and comfort.

- Robust building : frame with welded tubes
- Easy to use with stable frame and large wheels
- Chrome or TCT blade included
- Powder coated
- Transport handle
- Serial cutting length indicator
- Serial grip handle
- Option tilting extension



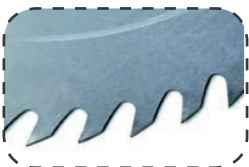
Serial cutting length indicator



WKS 700Z with option tilting extension



TCT blade



Chrome blade

| Circular log carriage saw with chrome blade with TCT blade | WKS 650 | WKS 700 | WKS 700Z |
|--|---------------|--------------|-------------|
| Power supply | single-phased | three-phase | PTO tractor |
| Direct transmission | 230 V 3.5 kW | 400 V 5.5 kW | |
| Blade Ø and boring (mm) | Ø 650 / 30 | Ø 700 / 30 | Ø 700 / 30 |
| Blade rotation (t/min) | 1450 | 1450 | 1450 |
| Height of work (cm) | 70 | 70 | 70 |
| Cut per turn (cm) | 24 | 26 | 26 |
| Weight (kg) | 120 | 120 | 120 |
| TCT Blade Ø 650 mm (LAM00009) | | | |
| TCT blade Ø 700 mm (LAM00011) | | | |
| Chrome blade Ø 650 mm (LAM00008) | | | |
| Chrome blade Ø 700 mm (LAM00010) | | | |
| PTO shaft type 3 (CAR00001) | | | |
| Tilting extension for KWS 550/600 et WKS 650/700 (RAL00005) | | | |
| 400 V female plug (PRI00002) | | | |

■ Circular sliding table saw - KRTS series

With blade diameter from 650 to 700 mm, KRTS saws are ideal for simple and ergonomics working on table.

- Robust building : frame with welded tubes
- Undervoltage switch breaker and phase inverter
- Easy to use with stable frame and large wheels
- Mobile table mounted on bearings
- Chrome steel blade included
- Powder coated



KRTS 650



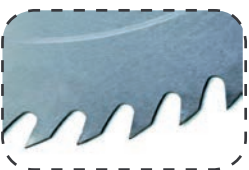
KRTS 700Z



KWTS 700 with sliding table and tilting combined available. CONTACT US



TCT blade



Chrome blade

| Circular sliding table saw with chrome blade with TCT blade | KRTS 650 | KRTS 700 | KRTS 700Z |
|---|---------------|--------------|-------------|
| Power supply | single-phased | three-phase | PTO tractor |
| Direct transmission | 230 V 3.5 kW | 400 V 5.5 kW | |
| Blade (mm) | Ø 650 | Ø 700 | Ø 700 |
| Blade rotation (tr/min) | 1550 | 1450 | 1450 |
| Height of work (cm) | 84 | 84 | 84 |
| Cut per turn (cm) | 20.5 | 20.5 | 20.5 |
| Weight (kg) | 140 | 140 | 140 |
| TCT blade Ø 650 mm (LAM00009) | | | |
| TCT blade Ø 700 mm (LAM00011) | | | |
| Chrome blade Ø 650 mm (LAM00008) | | | |
| Chrome blade Ø 700 mm (LAM00010) | | | |
| PTO shaft type 3 (CAR00001) | | | |
| 400 V female plug (PRI00002) | | | |

■ Band-saw - RB series

3 wheel sizes for this band-saw, working with precision and robustness.

- Cutting precision with double blade brass guiding system (up and down)
- Cast iron wheel for better cut line
- Cork seal on wheel for a better guidance
- All PTO driven models are equipped with a safety lever to release
- Blade included
- Belt driven
- Blade tension indicator



RB700



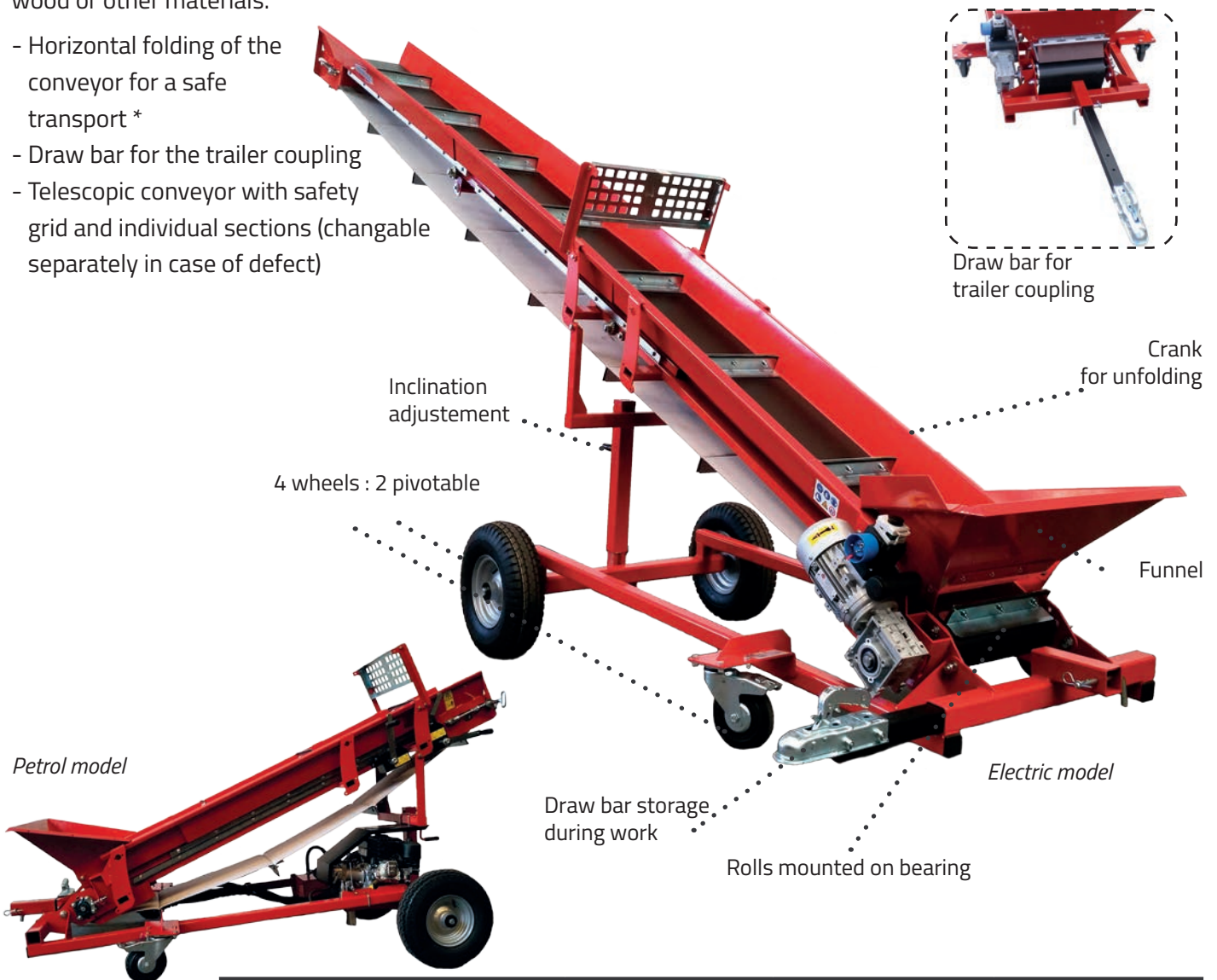
Optional band-saw evacuation conveyor. 4 m for 3-point hitch

| Band-saw | RB 520M | RB 520T | RB 620M | RB 620T | RB 620P | RB620PEM | RB620PET | RB 720T | RB 7200P | RB 720PET |
|---|-----------------------------|-----------------------------|-----------------------------|-----------------------------|-------------|-------------------------------------|-----------------------------------|---------------------------|-------------|---------------------------------|
| Power supply | single-phased 230V 2.2kW | three-phase 400 V 2.2 kW | single-phased 230V 2.2kW | three-phase 400 V 2.2 kW | PTO tractor | PTO + single-phased 230V - 2.2kW | PTO + three-phase 400V - 2.2kW | three-phase 400 V 3 kW | PTO tractor | PTO + three-phase 400 V 3 kW |
| Ø flywheel (mm) | 520 | 520 | 620 | 620 | 620 | 620 | 620 | 720 | 720 | 720 |
| Height/width of cut (cm) | 39/50 | 39/50 | 43/61 | 43/61 | 42/61 | 42/61 | 42/61 | 49/70 | 49/70 | 49/70 |
| Dimension of table (cm) | 78/68 | 78/68 | 97/80 | 97/80 | 97/80 | 97/80 | 97/80 | 97/80 | 97/80 | 97/80 |
| Dimension (HxLxW cm) | 202x100x68 | 202x100x68 | 217x120x83 | 217x120x83 | 217x130x80 | 217x130x80 | 217x130x80 | 237x125x85 | 236x135x80 | 236x135x80 |
| Weight (kg) | 200 | 200 | 260 | 260 | 269 | 285 | 285 | 320 | 318 | 334 |
| Guidance trolley (SCI000510) | | | | | | | | | | |
| Blade for band-saw 500 (30x0.6 lg 4300) (LAM00029) | | | | | | | | | | |
| Blade for band-saw 600 (30x0.6 lg 4740) (LAM00030) | | | | | | | | | | |
| Blade for band-saw 700 (30x0.6 lg 5200) (LAM00031) | | | | | | | | | | |
| PTO shaft type 3 (CAR00001) | | | | | | | | | | |
| Evacuation conveyor (hydraulic driving) (Ref. BTR4000 H/SR) (tractor with single effect valve and free return required) | | | | | | | | | | |

■ 5 M independant conveyor - TMB

Independant conveyor, ideal to transport wood or other materials.

- Horizontal folding of the conveyor for a safe transport *
- Draw bar for the trailer coupling
- Telescopic conveyor with safety grid and individual sections (changable separately in case of defect)



| Conveyor | Electric : single or three phase | Hydraulic tractor | Petrol engine |
|-----------------------------------|----------------------------------|-------------------------------|---------------------------|
| Width (cm) / length (m) | 35 / 5 | 35 / 5 | 35 / 5 |
| Conveyor speed (m/s) | 0.6 | depending from tractor output | 0.4 - 0.9 |
| Engine power | 0.75 kW | 0.75 kW | 4 HP |
| Height of loading / unloading | 60 / Min: 1.7 - Max: 3 | 60 / Min: 1.7 - Max: 3 | 60 / Min: 1.7 - Max: 3 |
| Dimension of the funnel (cm) | 70 x 40 | 70 x 40 | 70 x 40 |
| Dimension of transport (HxLxW cm) | 100 x 260 x 120 | | |
| Weight (kg) | 290 | 290 | 325 |

Option: Hydraulic flow control for Hy-version (REG000100)

*Non-road use

The different woods and their burning characteristics

PINE AND SPRUCE

They are easy to light and wood chips are therefore ideal for lighting a fire. The soft wood tends to make sparks. The molten resin blocks the wood's grain, moisture in the log turns to steam and under pressure bursts the log.

BEECH

Develops a lot of embers and therefore, equal and sustainable heat. Beech flames are beautiful, burning essentially without sparks. Suitable for all types of log burners, particularly those with a window.

OAK

Has high calorific value and burns for a long time. Ideal for log burners used as a heating medium (e.g. Tiled stove).

ASH OR MAPLE

Hardwoods that have a comparable combustion process to Beech.

BIRCH

The ideal wood for fireplaces. Does not spark and produces blue flames and scented fragrances. Its white bark makes for pleasant decoration.

POPLAR AND WILLOW

This wood burns very quickly and is therefore not very suitable for firewood. Can optionally be used as a 'summer wood' for a fireplace when it is not desired for energy performance.

UNITS SALES

Firewood is usually offers :

IN METRE CUBE :

1 x 1 x 1 m of pure wood without cavity

IN STERE :

1 x 1 x 1 m of stacked wood with cavities

STERE BULK :

1 x 1 x 1 m bulk timber with cavities

WEIGHT :

in kilograms (kg) with the following data; Wood type and moisture content.

To avoid misunderstandings, it is recommended to seek accurate information on the timber when buying, because depending on the type, even the energy content is varied.

Reference value for the cubic meter and stere

The dimensions of the wood in a cubic meter of firewood depend on the shape and wood lopping, diameter and length of the log and also the care when cutting.

Since wood fuel is not a homogeneous raw material, the following table consists only of average conversions for different assortments.

| Round wood in m ³ | Storage in stere | | Slice 33 cm piled up m ³ in m ³ | Quarters of 33 cm jumbled m ³ |
|---------------------------------|------------------|-------|---|--|
| | not split | spilt | | |
| 1 | 1.4 | 1.6 | 1.4 | Spruce : 2.2 Beech : 2 |
| 0.7 | 1 | 1.2 | 1 | Spruce : 1.6 Beech : 1.4 |
| 0.4 | 0.6 | 0.7 | 0.6 | 1 |

SKIDDING RANGE



■ Hydraulic skidding grapple

The skidding grapple is made for lifting and moving timber quickly and easily.

With the toothed bar on the 3-point hitch, the clamp can move and maintain properly entire timbers, or even much shorter.

The big advantage is that it requires only a low tractor power and does not need to get off the tractor to handle.

RZ 110 model

- Recommended for tractor until 30 HP
- Double acting cylinder
- Rotating angle of 80° (left and right)
- Good tensioning capacity
- Easy adaptation on the tractor 3 point hitch
- Cat. I
- **Tractor with double effect valve required**



RZ 110

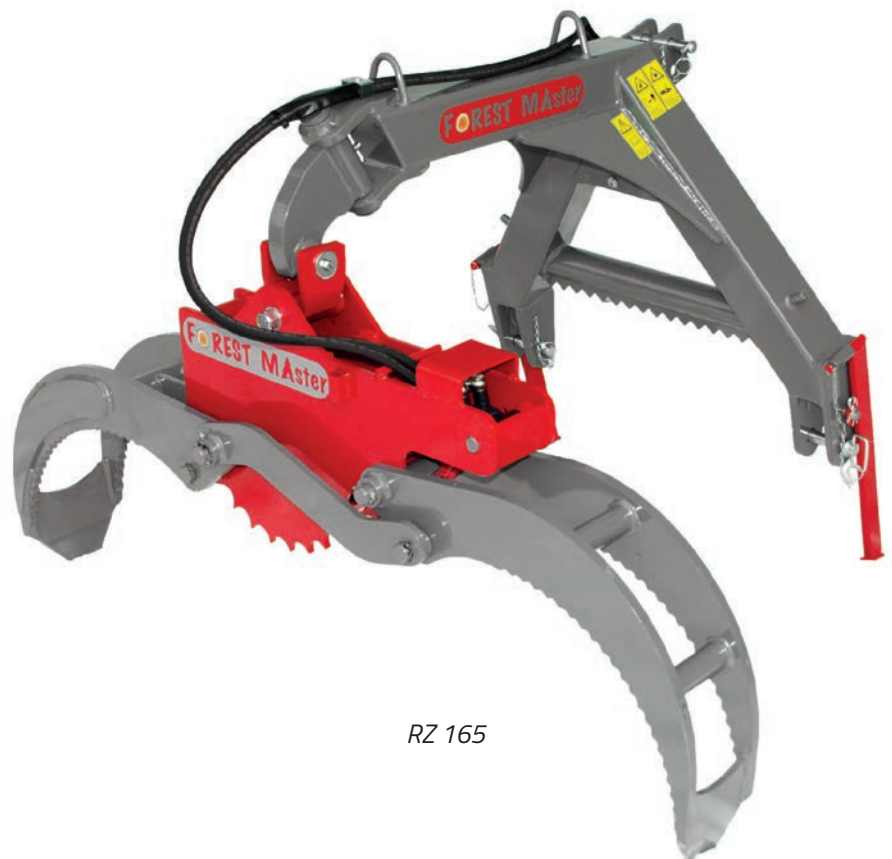
RZ 165 model

The skidding grapple is made for lifting and moving one heavy timber, or several at the same time.

The clamping capacity is expected to provide a safe work especially when you move stacked wood or branches.

The notched arms have specific shape to prevent the wood from slipping.

- Recommended for tractor from 60 to 120 HP
- Double acting cylinder
- Rotating angle of 82° (left and right)
- Good tensioning capacity
- Easy adaptation on the tractor 3-point hitch
- Cat. II
- **Tractor with double effect valve required**



RZ 165

■ RZ165-F Model

This new skidding grapple with radio remote control winch makes you reach even more easily timbers to move them.

Work quicker and safely.

- Recommended for tractor from 60 to 120 HP
- Double acting cylinder
- Rotating angle of 82 ° (left and right)
- Good tensioning capacity
- Easy adaptation on the tractor 3 point hitch
- Cat. II
- **Tractor with double effect valve required**

■ Radio remote control winch FW 1400-R

- Cable 35m / 6mm
- Works with radio remote control
- Hydraulic supply
- Traction power: 1400 kg
- **Tractor with single effect valve required**



RZ 165-F



Serial storage bar on
all model RZ 165



Winch on RZ 165-F

Skidding grapple RZ 165-F (with radio remote control winch FW 1400-R)

| | |
|-----------------------|-------------|
| Tightening power (to) | 9 |
| Max. opening (cm) | 170 |
| Min. opening (cm) | 11 |
| Closed length (cm) | 122 |
| Ø max. of timber | 70 |
| Ø min. of timber | 12 |
| Max. pressure (bar) | 180 |
| Cable | 6 mm / 35 m |
| Traction power (kg) | 1400 |
| Cable speed (m/s) | 0.38 |
| Weight (kg) | 330 |

Radio remote control winch FW1400- R
for adaptation on RZ 165
(not compatible with RZ 165-R 4.5 and RZ165-R6)

Adaptator for „euro“ front loader

■ RZ165-R model

The skidding grapple rotator allows to manipulate logs with precision, even in a slope.

- Recommended for tractor from 60 to 120 HP
- Double acting cylinder
- Continuous rotation
- Good tensioning capacity
- Easy adaptation on the tractor 3 point hitch
- Cat. II
- **Tractor with double effect valve required**



RZ 165-R



Adaptor for front loader
(euro)

Grapple RZ 110

Grapple RZ 165

Grapple RZ 165-R 4,5 to / with rotator 4,5 to (winch not included)

Grapple RZ 165-R 6 to / with rotator 6 to (winch not included)

| | RZ 110 | RZ 165 |
|---------------------------------|--------|--------|
| Tightening power (to) | 6 | 9 |
| Max. opening (cm) | 110 | 170 |
| Min. opening (cm) | 6 | 11 |
| Closed length (cm) | 100 | 122 |
| Ø max. of timber (cm) | 45 | 70 |
| Ø min. of timber (cm) | 7 | 12 |
| Max. pressure (bar) | 180 | 180 |
| Weight (kg) | 140 | 295 |
| Adaptor for front loader (euro) | | |

Radio remote control B&B

- New shape can be worn closer to the body so as not to restrict movement
- Large distance capacity
- Large display and easy to use, even with thick gloves
- An anti involuntary action protection (eg branches) to ensure maximum safety
- Multiple operating positions from the hip, abdomen or chest

F10 model

4 functions (6 functions with MAS option) for electro-hydraulic winch with single drum (F10 ET model).

6 functions (8 functions with MAS option) for electro-hydraulic winch with double drum (F10 DT model).

Switch control by levers.

1. Tighten the cable (x2 with double drum)
2. Release the cable (x2 with double drum)
- 3/4. Gas + / -
- 5/6. Switching on / off the tractor (MAS option)

Included charger, receiver, transmitter, accu and belt

Not included accelerator cylinder for Gas +/-

F6 model

4 functions for electro-hydraulic winch with single drum.

Switch control by button.

1. Tighten the cable
2. Release the cable
- 3/4. Gas + / -

Included receiver, transmitter, accu and belt

Not included accelerator cylinder for Gas +/- and charger



Radio remote control for winch with single drum

Radio remote control 4 functions F10 ET, for single winch with gaz+ /gaz-*

Radio remote control 6 functions F10 ET/MAS, for single winch with gaz+/gaz- * and function on/off the tractor

Radio remote control 4 functions F6 ET, for single winch with gaz+/gaz-*

Radio remote control for winch with double drum

Radio remote control 6 fonctions F10 DT, for double winch with gaz +/gaz-*

Radio remote control 8 functions F10 DT/MAS, for double winch with gaz+/gaz- * and function on/off the tractor

*without accelerator cylinder

Please tell us which winch brand and model you have when you order.

F6 ET



Receiver



Accessories

Support for transmitter F 10/F6 (Ref. SUPP F6/F10)

Charger 230 V (CHA00024)

4 rechargeables accu Sanyo AA / electric 230 V

Charger on cigarette lighter 12 V

(CHA00036) 2 rechargeables accu AA to charge on the 12 V of the cigarette lighter

Replacement battery Sanyo enloop AA

(BAT00004) 4 accu Sanyo enloop AA 1,2 V in a plastic box

Accelerator cylinder p. 75

■ Radio remote control ELCA - 4 functions

Radio remote control 4 functions for electro-hydraulic winch for single drum.

1. Tighten the cable
2. Release the cable
- 3/4. Gas + / -

Included charger, receiver, transmitter and belt



Radio remote control for single winch

Radio remote control 4 functions ELCA, for single winch

■ Accelerator cylinder WARNER

Control motor for continuous control of gas for tractors and farming machines to mechanical throttle. 12 V.

- Compact sealed aluminium housing
- Stroke 50 mm
- Power : 440 N
- Max static power : 1350 N
- Speed 11 mm/s
- Operating temperature -25 ° C + 65 ° C
- Protection against overload
- IP65 protection
- Dimensions (WxHxD) : 174x74x38 mm
- Current consumption max 3 A at 12 V



Example :



Tractors Fendt / Valtra

Accelerator cylinder (Warner) 12 V (VER00024)

3 Tractor inclination control device

■ Tractor inclination control device

This patented device surveys the inclination of tractor and stops tightening of winch as soon as a risk of reverse appears.

Only available on electro-hydraulic winch with radio remote control.

> 3 inclination tolerances available, to select :

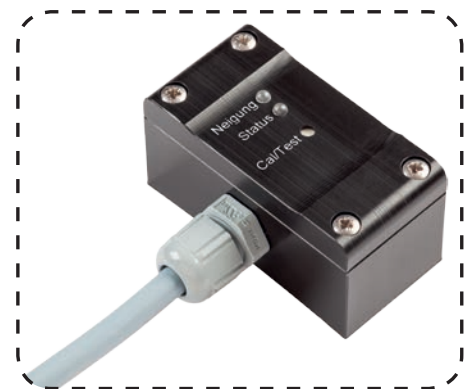
- Safety : 13° / 22° (left/right - front/back)
- Standard : 15° / 25° (left/right - front/back)
- Large : 17° / 28° (left/right - front/back)

> Calibration of the zero point

> Led display of functions « on » and « out of tolerance »

> Test mode for functional check

> Possible to by pass the control device



NU 2515 GU



NU 2515 GU N

NU 2515 GU with radio F10
NU 2515 GU N
Adaptable on TAJFUN winch with plug connection.

HANDLING RANGE



■ Bundler for 1 stere

Season your wood in a cubic meter bundler (at 1m) or half a cubic meter (50 cm). Easy to use and comfort with practice swing, time saving. Robust construction ensures a long service life. Pivoting mechanism ensures ergonomic work.

High points :

- Suitable for wood lengths of 33, 50 and 100 cm
- Easy to pivot (hydraulic/mechanical)
- With string or polyester strips
- Basket diameter : 120 cm
- On 3-point hitch or hitch + euro linkage for front loader
- Ergonomic work height
- Robust and durable



*Bundler with polyester strips
mechanical pivoting on 3-points
hitch + euro linkage for front
loader*

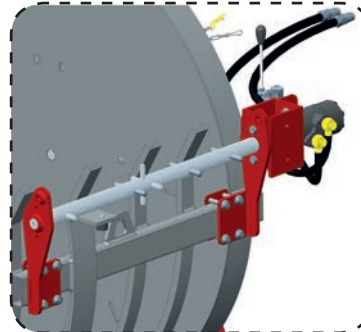




Mechanical pivoting



Hydraulic pivoting (left or right)



Hydraulic tension system (left or right)



Accessories kit for polyester strips bundler

Polyester bundler with mechanical pivoting

Polyester bundler with 3-point hitch

Polyester bundler with 3-point hitch + euro front loader

String bundler with mechanical pivoting

String bundler with mechanical tension and 3-point hitch

String bundler with mechanical tension and 3-point hitch + euro front loader

String bundler with hydraulic tension and 3-point hitch

String bundler with hydraulic tension and 3-point hitch + euro front loader

Evolute bundler - add functions

Option manual pivoting for all models

Option hydraulic pivoting for all models

Option euro front loader

Option hydraulic string tension (2 spool supports included)

Option mechanical string tension (2 spool supports included)

Option mechanical pre-tension

Option hydraulic pre-tension

Wide-angle PTO shaft (CAR00025)

Accessories kit for polyester strips bundler (FAG00140)
(500 m of polyester stripes 19 mm, reel, 1000 staples and clamp)

Reel with brake for polyester strips (FAG00141)

Clamp for polyester strips (FAG00142)

Polyester stripes 500 m / 19 mm (750 daN) (FAG00143 or 143A)
when ordering, specify mandrel $\varnothing 75$ or $\varnothing 200$

Staples 1000 pieces / 19 mm (FAG00144)

String spool (250 m 8 threads, 1040 daN) (FAG00130)

String spool (190 m 10 threads, 1250 daN) (FAG00131)

NEW
SIFF



SIFF - Support frame with lighting

| Supporting frame for woodsplitter 12/27To and bundler | SIFF |
|---|------|
| Width of the frame (cm) | 220 |
| Width with bundling unit and splitter (cm) | 270 |
| Width with lighting (cm) | 300 |
| Weight (Kg) | 122 |

Arm grapple

■ Arm grapple

Robust arm grapples for intensive handling. They can be fitted to front loader with standard EURO hitch and need hydraulic supply from tractor (double effect required).

Grapples are made of hardox steel for maximum tensile strength and an extended lifetime.

This steel also helps to lighten the grapple.

- Continuous rotation
- Rotator 3 t / 6 fins
- Great precision of movement
- Significant grip strength in order to grab and maintain logs of all sizes
- Grapple lightness increases its payload
- All axes are oversized to absorb all charges
- Optionally, it is possible to adapt the arm on the 3-point hitch for tractor / JCB / Manitou



| Arm grapple with rotator and serial euro front loader | KG180 R | KG210 R |
|---|---------|---------|
| Loading capacity (to) | 1 | 1 |
| Useful capacity (m ²) | 0.18 | 0.21 |
| Max. opening (cm) | 110 | 130 |
| Steel | Hardox | Hardox |
| Power at arm's end (kg) | 700 | 700 |
| Pressure recommended (bar) | 150-215 | 150-215 |
| Weight (kg) | 250 | 280 |

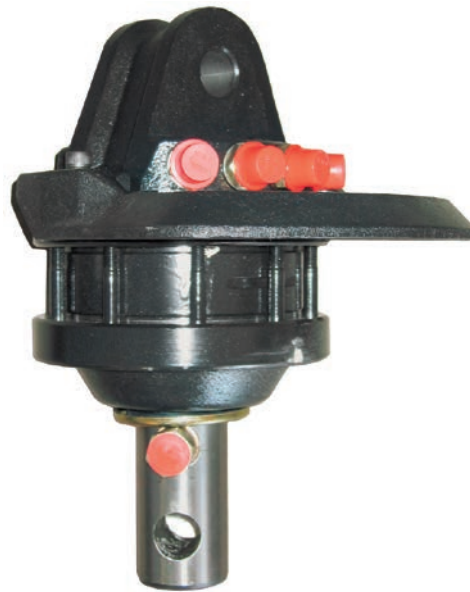
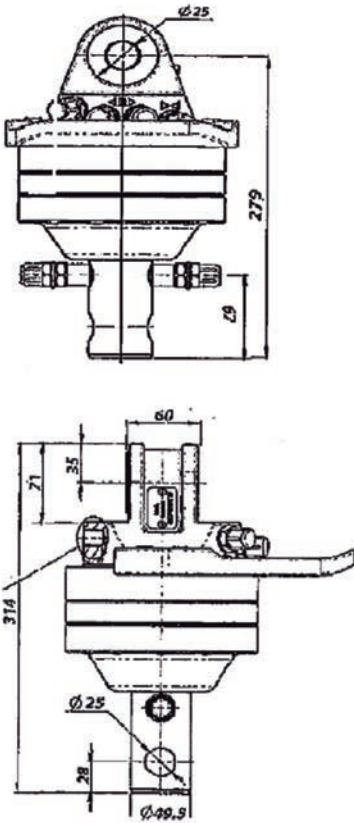
Supplement 3-point adaptator

Supplement Manitou adaptator

Supplement JCB adaptator



■ Rotator FHR 3000 L with shaft

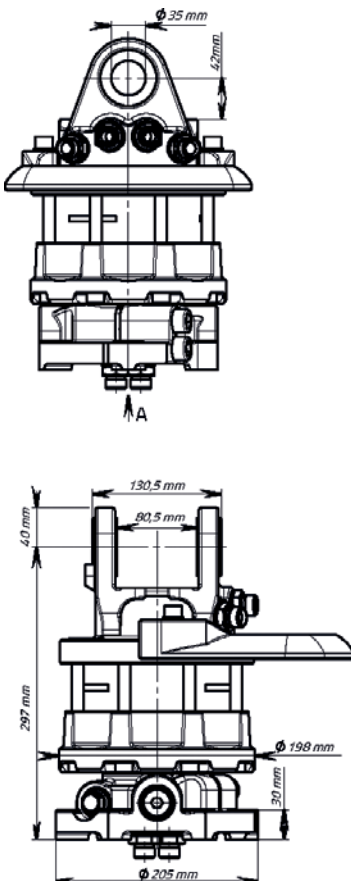


FHR 3000L
Rotator with shaft

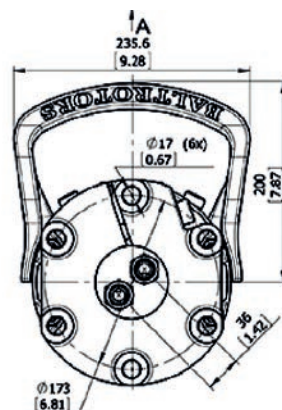


GR603
Rotator with flange

■ Rotator GR 603 with flange



| Rotator | GR 30 Q | FHR 3000 L | GR 603 |
|--|---------|------------|--------|
| Max axial load static (to) | 3 | 3 | 6 |
| \varnothing shaft or flange (mm) | 49,5 | 49.5 | 173 |
| \varnothing hole of shaft or flange (mm) | 25 | 25 | 6x17 |
| Max working pressure (bar): | | | |
| - Rotator | 250 | 250 | 250 |
| - Open | 200 | 200 | 200 |
| - Closed | 300 | 300 | 300 |
| Weight (kg) | 18 | 18 | 43 |





| Grapple (without rotator) | KG180 | KG210 | KG225 PRO | KG300 PRO | KG335 PRO |
|---|------------------|------------------|-------------------------------|-------------------------------|-------------------------------|
| Rotator recommended (not included) (to) | 3 | 3 | 6 | 6 | 6 |
| Max. opening (cm) | 110 | 130 | 140 | 155 | 160 |
| Max. capacity (cm ²) | 0.18 | 0.21 | 0.25 | 0.30 | 0.35 |
| Max. loading (to) | 1 | 1 | 2.5 | 3 | 3.5 |
| Steel | Hardox | Hardox | Hardox reinforced | Hardox reinforced | Hardox reinforced |
| Power at arm's end (kg) | 700 | 700 | 700 | 700 | 700 |
| Pressure recommended (bar) | 150-215 | 150-215 | 150-215 | 150-215 | 150-215 |
| Adaptation | shaft Ø 50 mm | shaft Ø 50 mm | flange 6 holes Ø 173 mm | flange 6 holes Ø 173 mm | flange 6 holes Ø 173 mm |
| Weight (kg) | 79 | 83 | 141 | 191 | 248 |

When ordering a grapple with rotator, add hoses kit :

FLX00948 for KG180 / KG210

FLX01002 + VIS10009 for KG 225

FLX01016 + VIS10010 for KG300 / KG335

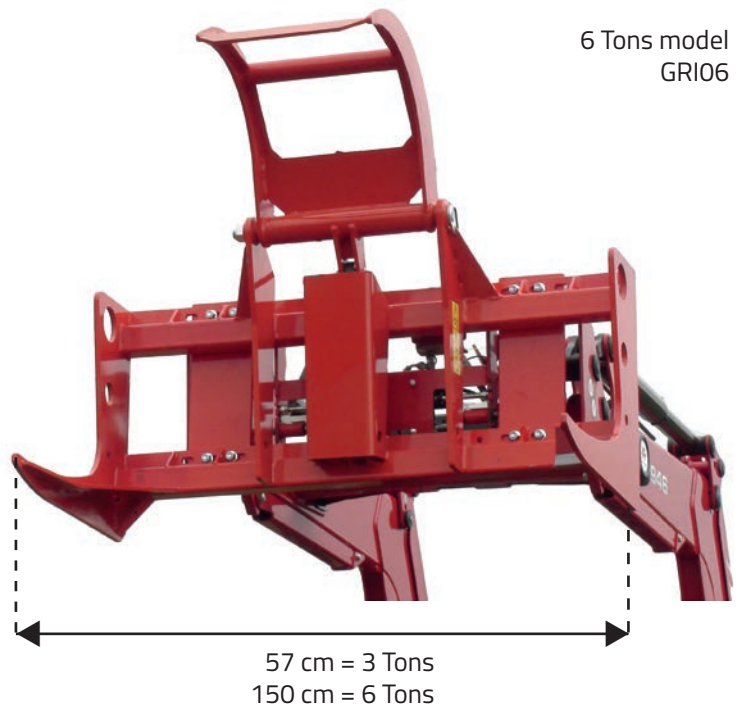
■ **Timber claw**

The timber claw is a powerful and robust tool. It has a massive but flexible structure to avoid twisting in case of heavy loads.

It is designed to lift, move and load timbers or poles, heavy-pipes and round bales.

- Load capacity of 3 to 6 tons depending on model
- Large opening angle
- Protected cylinder, hydraulics and hoses
- The top claw completely closes on the one below to handle even the thinnest material.
- Compatible : small tractor with front loader
- Hoses included
- **Tractor with double effect valve required**

6 Tons model
GRI06



| Timber claw with serial euro linkage | GRI03 | GRI06 |
|--------------------------------------|-----------|-----------|
| Max. loading (to) | 3 | 6 |
| Cylinder | hydraulic | hydraulic |
| Euro support | standard | standrad |
| Max. opening (cm) | 100 | 100 |
| Fork width (cm) | 57 | 150 |
| Weight (kg) | 185 | 250 |
| Supplement 3-point adaptator | | |
| Supplement Manitou adaptator | | |
| Supplement JCB adaptator | | |



■ Timber blade

The blade is of a particularly robust design. The hydraulic cylinder and the clamp have been designed for high loads. Its particular shape allows stability of any timber.

- Suitable for all front loaders with euro linkage
- Hoses included
- **Tractor with double effect valve required**



Timber blade PZ 1400 E with euro linkage and hydraulic arm

Timber blade PZ 1400 D with 3-point linkage cat. II and hydraulic arm

| | |
|---------------------|-----|
| Max. loading (to) | 2.4 |
| Max. opening (cm) | 90 |
| Width (cm) | 140 |
| Max. pressure (bar) | 180 |
| Weight (kg) | 210 |



FARMING RANGE

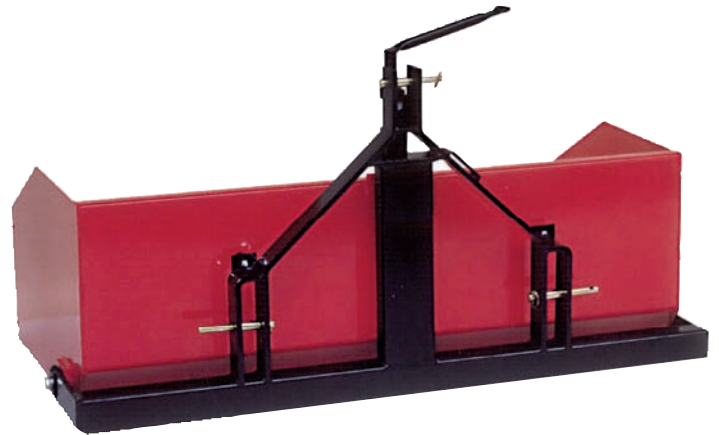


Universal bucket

■ Tilting universal bucket

Universal bucket on 3-point hitch tractor, with a tilting system for easy use. Wide opening angle in tilted position.

- Mechanical or hydraulic tilting
- High quality dumpster in 5mm thick sheet
- Optional side rail
- Cat. I and II
- Maximal loading : 900 kg
- **Tractor with double effect valve required for hydraulic model**



Mechanical bucket



Mechanical bucket

Specific articulation point of tilting system, making linkage more resistant.



Mechanical bucket with optional side rail

**STEEL
THICKNESS
5 mm**



| Bucket Hydraulic Mechanical | B100 | B125 | B150 | B175 | B200 | B225 |
|-----------------------------------|-----------|-----------|-----------|-----------|-----------|-----------|
| Width (cm) | 100 | 125 | 150 | 175 | 200 | 225 |
| Dimension (LxWxHcm) | 100x90x60 | 125x90x60 | 150x90x60 | 175x90x60 | 200x90x60 | 225x90x60 |
| Max. capacity (m ³) | 0.5 | 0.6 | 0.7 | 0.9 | 1 | 1.1 |
| Max. loading (kg) | 400 | 496 | 603 | 704 | 800 | 904 |
| Weight (kg) | 165 | 180 | 200 | 225 | 240 | 255 |
| Option side rail | RID100000 | RID125000 | RID150000 | RID175000 | RID200000 | RID225000 |
| Hardox blade (price per meter) | | | | | | |



■ Stone/wood fork

Stone forks are available in 3 widths (1.5 m / 2 m / 2.35 m), all made of quality steel for maximum resistance and durability.

High capacity in terms of stone volume to reduce the number of loading/unloading operations. The down part is cambered to avoid involuntary unloading. Specially made for carrying stones, this fork can also carry wood. Euro linkage included.

| Stone/wood fork | 1.5 M (FOU000150) | 2 M (FOU000200) | 2.35 M (FOU000230) |
|-------------------------------------|---------------------|-------------------|----------------------|
| Width (cm) | 150 | 200 | 235 |
| Max. capacity (m ³) | 0.9 | 1.2 | 1.49 |
| Standard | euro linkage | euro linkage | euro linkage |
| Weight (kg) | 215 | 265 | 405 |
| Supplement 3-points tractor adapter | | | |
| Supplement Manitou adapter | | | |
| Supplement JCB adapter | | | |

■ TM/TL Series

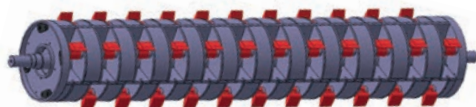
This machine can mulch branches and timbers up to 20 cm with its numerous chopperblades! It can be hitched on a tractor.

- Robust steel design
- Rotor hood hydraulic opening
- Adaptable on 3-point linkage
- Driving : 1 lateral shaft
- Double bottom 2x6 mm (very robust)
- Bearings autocentered and watertight
- Return with freewheel
- Rotor with mobile tools (TM) or fixed widia blade (TL)
- PTO shaft included



Forest mulcher TM without guard frame

TM model :



TL model :

Rotor with fixed widia blade



| Forest mulcher TM | TM 1400 | TM 1600 | TM 1800 | TM 2000 |
|-------------------------------------|----------------|---------------|----------------|----------------|
| Forest mulcher TL | TL 1400 | TL 1600 | TL 1800 | TL 2000 |
| Working width (cm) | 140 | 160 | 180 | 200 |
| Total width (cm) | 170 | 192 | 212 | 234 |
| Weight (kg) | 1060 | 1110 | 1160 | 1210 |
| Number of hammer (TM) | 24 | 28 | 32 | 36 |
| Min. tractor power | 80 HP / 60 kW | 80 HP / 60 kW | 80 HP / 60 kW | 80 HP / 60 kW |
| Max. tractor power | 100 HP / 74 kW | 100 HP / 74kW | 130 HP / 97 kW | 130 HP / 97 kW |
| Dimension (LxWxH) cm | 170x112x112 | 192x112x112 | 212x112x112 | 234x112x112 |
| Guard frame (mechanical adjustment) | (BA 1400) | (BA 1600) | (BA 1800) | (BA 2000) |
| TM - spare hammers | | | | |
| TL - spare widia blade | | | | |



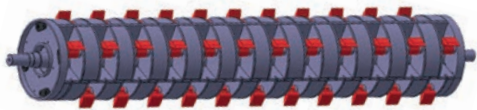
■ TF/DT Series

This machine can mulch branches and timbers up to 30 cm with its numerous chopperblades!

It can be hitched on a tractor.

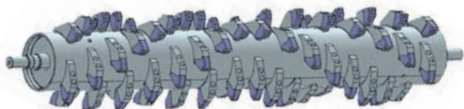
- Robust steel design
- Rotor hood hydraulic opening
- Adaptable on 3-point linkage
- Driving : 2 lateral shafts
- Gearbox with flywheel
- Double bottom 2x8 mm (very robust)
- Return with freewheel
- Rotor with mobile hammers
- PTO shaft included

Standard :



On demand :

Rotor with fixed widia blade



*Forest mulcher TF/DT 2500
with guard frame*

| Forest mulcher | TF/DT 2100 | TF/DT 2500 |
|---------------------------------------|-------------------|-------------------|
| Working width (cm) | 210 | 250 |
| Total width (cm) | 250 | 292 |
| Weight (kg) | 2350 | 2520 |
| Number of hammer | 37 | 45 |
| Min. tractor power | 130 HP / 97 kW | 130 HP / 97 kW |
| Max. tractor power | 200 HP / 150 kW | 200 HP / 150 kW |
| Dimension (LxWxH) cm | 250x145x120 | 292x145x120 |
| Guard frame (hydraulic adjustment) | (BA TF/DT 2100) | (BA TF/DT 2500) |
| Spare hammers | | |
| Spare widia blade | | |

ACCESSORIES



■ Opening return pulley

- The valve mechanism allows an easy cable insertion
- Rotating high-resistance hook
- With latch hook
- Only for steel cable



| Return pulley with valve | 80 kN POU00015 | 140 kN POU00016 |
|--------------------------|-------------------|--------------------|
| Ø pulley (mm) | 140 | 140 |
| Ø cable (mm) | 12 | 14 |
| Weight (kg) | 6.5 | 8.5 |

■ Aluminium return pulley

- Suitable for steel cables and polyester straps
- Rotating lock
- With ball bearing
- Lightness from aluminium
- Rotating flange

| Aluminium return pulley | 110 kN POU00055 | 150 kN POU00056 | 170 kN POU00057 |
|----------------------------|--------------------|--------------------|--------------------|
| Ø and width of pulley (mm) | 158-35 | 198-42 | 198-42 |
| Ø cable (mm) | 14 | 16 | 16 |
| Weight (kg) | 2.4 | 3.9 | 5.1 |



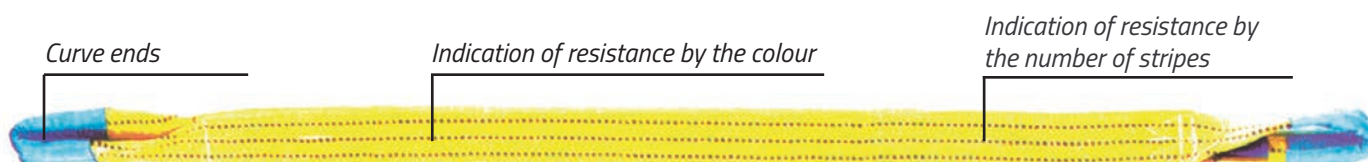
■ Polyester strap

- Reinforced curls ends according to EN 1492-1
- Low friction
- No swelling in high humidity
- Polyester doubled for maximum strength

| Polyester strip with 2 curve ends | | | |
|-----------------------------------|-------------|--------|--------|
| | Colour code | Width | Length |
| SAN00010 | green | 60 mm | 3 m |
| SAN00011 | yellow | 90 mm | 3 m |
| SAN00012 | grey | 120 mm | 3 m |

Indications of resistance by the number of stripes and by the colour

| Break point coef.7 | Colour code | Indication of resistance by the number of stripes | | |
|--------------------|-------------|---|---------|---------|
| | | 100% | 80% | 200% |
| 14 000 kg | green | 2000 kg | 1600 kg | 4000 kg |
| 21 000 kg | yellow | 3000 kg | 2400 kg | 6000 kg |
| 28 000 kg | grey | 4000 kg | 3200 kg | 8000 kg |

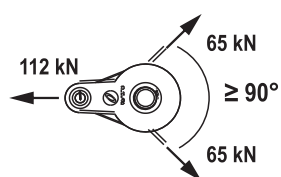
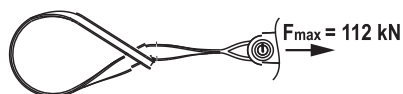
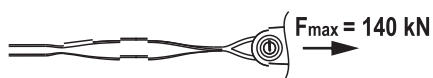


Mobile pulley TAJFUN PS 130

- Large loading capacity
- Low weight and small size compared to others pulley on market
- «SMART» locking allows quick and easy opening of lateral face of pulley
- High quality materials
- 3 meters long lanyard

Stowage lanyard

Specifically adapted to work comfortably with TAJFUN PS 130 mobile pulley and forest winches.



Mobile pulley, 2.55 kg with 3 M lanyard
 Max. loading capacity : 130 kN
 Break point : 260 kN



Chain rope connector Red cat.8



Blue cat.10



Rotating chain rope connector Red cat.8 / Blue cat.10



Sliding hook Cat. 8



Hitting hook



Blocking sleeve

- For winch cable \varnothing 10 to 14 mm



Choker

- For winch cable

Sliding cable end



| Reference | w mm | For chain | angle | Weight kg | Traction daN |
|-----------|---------|-----------|-------|--------------|-----------------|
| CRO00021 | 20 | 8 mm | 45° | 0.65 | 4500 |
| CRO00022 | 20 | 10 mm | 45° | 0.90 | 6500 |

| Reference | Dimensions mm | | For chain | Weight kg | Traction daN |
|-----------|---------------|-------|-----------|--------------|-----------------|
| | w | l | | | |
| CRO00023 | 20 | 145 | 8 mm | 0.61 | 6000 |
| CRO00024 | 36 | 207.5 | 10 mm | 1.38 | 8500 |

| Reference | w mm | For chain | angle | Weight kg | Traction daN |
|-----------|---------|-----------|-------|--------------|-----------------|
| CRO00020 | 20 | 8 mm | 45° | 0.68 | 4500 |
| CRO00019 | 20 | 8 mm | - | 0.68 | 6500 |

| Reference | Cable \varnothing max | Dimensions d | g | g1 min | Weight kg | Traction daN |
|-----------|----------------------------|-----------------|----|-----------|--------------|-----------------|
| CRO00003 | 20 | 16 mm | 25 | 17 | 0.69 | 3000 |
| CRO00006 | 20 | 22 mm | 26 | 17 | 0.97 | 5000 |

| Designation | Weight kg | Traction daN |
|---|--------------|-----------------|
| Hitting hook for log winch CRO000100 | 0.65 | 4000 |

Blocking sleeve + corners \varnothing 10/14 mm (DOU00003)

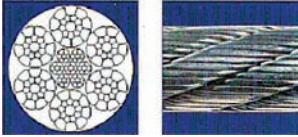
Choker for winch cable \varnothing 10/14 mm (CHO00007)

| Reference | Cable \varnothing | Length | Weight kg | Traction daN |
|-----------|------------------------|--------|--------------|-----------------|
| EXT00001 | 8-12 mm | 23 cm | 1.3 | 6000 |

Cable / chain / hook

High quality steel cable

- High strength
- Available diameters : 9, 10, 11, 12, 13 and 14 mm
- Standard assembly : 1x loop + Sliding hook



| Steel cable (mm) | Ø 9 | Ø 10 | Ø 11 | Ø 12 | Ø 13 | Ø 14 | Ø 16 | Ø 18 |
|------------------------|----------|----------|----------|----------|----------|----------|----------|----------|
| Break point (kN) | 84 | 101 | 122 | 142 | 170 | 200 | 239 | 297 |
| Ref. | CAB10009 | CAB10010 | CAB10011 | CAB10012 | CAB10013 | CAB10014 | CAB10016 | CAB10018 |
| Weight per meter (kg) | 0.453 | 0.543 | 0.655 | 0.764 | 0.881 | 1.01 | 1.29 | 1.59 |
| 1x loop + Sliding hook | | | | | | | | |

Red skidding chain cat. 8

- Chain with hook and needle



Round skidding chain / red cat. 8 + hook + needle (galvanised)

Ø8 mm, Lg 2.5 m (traction : 40 kN / break : 80 kN) (CHA00017)

Ø8 mm, Lg 4 m (traction : 40 kN / break : 80 kN) (CHA00017A)

Ø10 mm, Lg 2.5 m (traction 63 kN / break : 126 kN) (CHA00018)

Square skidding chain / red cat. 8 + hook + needle (painted)

Ø8 mm, Lg 2.5 m (traction : 45 kN / break : 90 kN) (CHA00019)

Ø10 mm, Lg 2.5 m (traction : 63 kN / break : 126 kN) (CHA00020)

Round skidding chain / blue cat. 10 + hook + needle (galvanised)

Ø8 mm, Lg 2.5 m (traction : 50 kN / break : 100 kN) (CHA00047)

Ø8 mm, Lg 4 m (traction : 50 kN / break : 100 kN) (CHA00047A)

Ø10 mm, Lg 2.5 m (traction : 80 kN / break : 160 kN) (CHA00048)

Square skidding chain / blue cat. 10 + hook + needle (painted)

Ø8 mm, Lg 2.5 m (traction : 60 kN / break : 120 kN) (CHA00037)

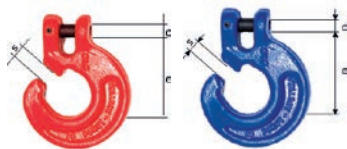
Ø10 mm, Lg 2.5 m (traction : 85 kN / break : 170 kN) (CHA00050)

Blue skidding chain cat. 10

- Chain with hook and needle



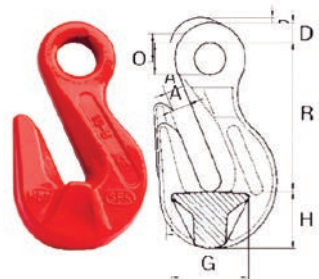
Hook for skidding chain



Rouge : cat. 8 / Bleu : cat.10

| Reference | d | Dimension e mm | For chain | s | Weight kg | Traction daN |
|-----------|------|----------------|-----------|----|-----------|--------------|
| CRO00013 | 10.0 | 59.0 | 8 mm | 10 | 0.38 | 6000 |
| CRO00014 | 12.5 | 80.8 | 10 mm | 12 | 0.76 | 8500 |
| CRO00015 | 10.0 | 59.0 | 8 mm | 10 | 0.38 | 6000 |
| CRO00016 | 12.5 | 80.8 | 10 mm | 12 | 0.76 | 8500 |

Parallel hook with eyelet



| For chain | Reference | Dimensions mm | | | | | | Weight | Traction |
|-----------|-----------|---------------|----|----|----|----|----|--------|----------|
| Ø mm | | A | D | O | R | G | H | kg | daN |
| 8 | CRO00017 | 10 | 10 | 16 | 60 | 30 | 24 | 0.23 | 4000 |
| 10 | CRO00018 | 13 | 11 | 21 | 80 | 44 | 31 | 0.59 | 6300 |

Small moss remover

- Fixed on a small tractor back, to remove moss and roots from grass surface
- 2 rows of 10 shifted peaks for scarification on a 1m width
- Central part dimension : 1000 x 235 mm
- Ballasting weight : min. 30 kg recommended

*Small moss remover*

Small moss remover 1000 x 235 mm (EMO00010)

Large moss remover

- Fixed on a tractor back, to remove moss and roots from grass surface
- 4 rows of 20 shifted peaks for scarification on a 2m width
- Central part dimension: 2000 x 590 mm
- Ballasting weight : min. 30 kg recommended

*Large moss remover*

Large moss remover 2000 x 590 mm (EMO000200)

Plastic frame for wood filling

- Exists in 40 and 60 L
- Maximum wood length max. 30 cm



| | |
|---------------------|-----------|
| Frame 40 L for wood | CAD000040 |
|---------------------|-----------|

| | |
|---------------------|-----------|
| Frame 60 L for wood | CAD000060 |
|---------------------|-----------|

| | |
|-----------------------------------|-----------|
| Bag 40 l, 50 x 85 cm with locking | FIL000141 |
|-----------------------------------|-----------|

| | |
|-----------------------------------|-----------|
| Bag 60 l, 60 x 85 cm with locking | FIL000160 |
|-----------------------------------|-----------|

Steel articulated frame for wood storage

- Accessory : filet



Steel articulated frame for filet of 1000 L (CAD0010000)

Filet 1000 L capacity 194 x 140 cm, for euro pallet with UV protection (BIG001000)

Sapie, slaughter lever, chainsaw support and lifter

OCHSENKOPF sapie

- Ergonomic use
- High durability



| | |
|---|-----------|
| Sapie OX 173 E-0500 Length 380 mm, weight 0.7 kg | SAP000001 |
| Sapie OX 173 H-0580 Length 800 mm, weight 1.1 kg | SAP000002 |
| Slaughter lever OX 58 -0800 Length 800 mm, weight 2.8 kg | LEV000001 |
| Slaughter lever OX 58 -1200 Length 1.300 mm, weight 3.6 kg | LEV000002 |

OCHSENKOPF Slaughter lever

- Powerful, effective and ergonomic
- Forged steel
- Comfortable and non-skid cork handle
- Adjustable hook



Safety rules :

- One user at a time
- Maximum load 150 kg at the handle
- In case of damage, the product must be replaced

Chainsaw support

- Reversible for right or left-handed
- Adaptable to all chainsaw models
- With wood blocking by lug and claw handle



Chainsaw support
compatible with all models (CHE000100)

Jack for front wheels mover

- Maximum diameter 400mm
- Adjustable width
- Lifting capacity : 250 kg maximum

Jack for front wheels mover
Length 380 mm, weight 0.775 kg (CRI000100)



Log trolley

Steel trolley, ideal for storing and transporting wood logs up to a length of 50 cm.

- Elegant wood handle makes moving easy
- Volume : L 42 x W 49 x H 80 cm
- Weight : 32 kg (without wood)
- Solid tyres



Individual laser cutting is possible from a minimum order quantity of 10 pieces (no extra costs)



Log trolley

Without logo (CHA000100)

Logo **AMR** (CHA000100A)



WARRANTY DURATION

- > Log splitter - AMR : 2 years
- > Kindling machine, Kindlet - FUELWOOD : 1 year
- > Grapple and other products - KTS : 1 year
- > Grapple and other products FOREST MASTER : 1 year
- > Quatromat & Solomat - AMR : private : 2 years / professional : 1 year
- > Saw ST700 : 2 years
- > Little circular saw : 2 years
- > Band saw : 1 year
- > Conveyor TMB - AMR : 2 years
- > Forest mulcher - Zanon : 1 year
- > Stones fork - AMR : 1 year
- > Radio remote control : 2 years

The warranty is valid from the date of machine reception.

TERMS OF WARRANTY

- For the warranty to be valid, you have to provide the warranty sheet duly completed (point of sale stamp, date of purchase - salesperson's signature, serial number and year of manufacture) along with the invoice.
- The warranty only covers repairs involving replacing items which have proved to be defective after verification by AMR. The cost of spare parts is borne by AMR. Labour costs and travel expenses are borne by the dealer. Wearing parts (brass slide, cable, belt) are not covered by the warranty. The warranty does not take into account transport costs.
- For the safety of the user and the validity of the warranty, it is absolutely essential to use spare parts recommended by AMR (contact your dealer for more information).

The warranty is cancelled :

- If there have been attempts to carry out repairs not prescribed by the manufacturer,
- In the event of a defect resulting from poor maintenance or misuse by an unauthorised person.

LEGALS

Subject to correction of misprints and composition as well as changes in prices and product developments .

The product warranty is exclusive wear parts. References of use and recommended wood are indications and depend on the context and the materials used. Non-contractual photo.

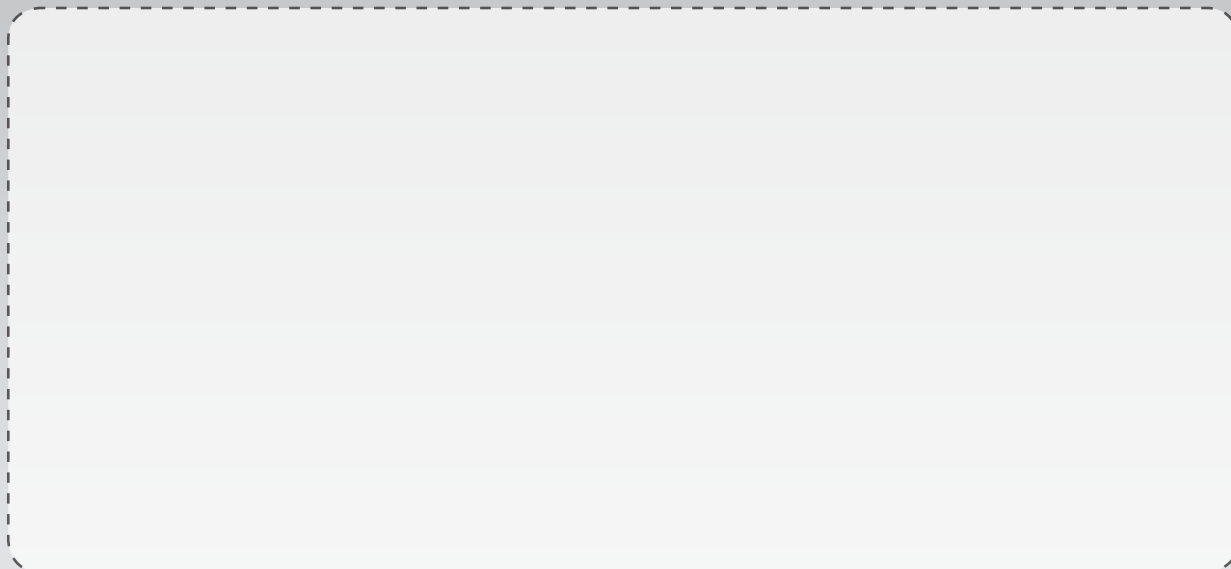
Responsible for content : AMR SAS - 1 rue de l'Industrie 67390 ELSENHEIM (FRANCE) - Tel: 03 88 58 69 69

Fax: 03 88 58 69 70

info@a-m-r.fr

www.a-m-r.fr

YOUR DEALER



Exhibitions

| | | |
|-------------|-------------|--|
| APR | 13-15/04/18 | FORST Live Offenburg (Germany) |
| MAY | 08/05/18 | Portes ouvertes AMR Elsenheim (France) |
| JUNE | 8 -10/06/18 | Terre en Fête Tilloy les mofflaines (France) |
| JUNE | 21-23/06/18 | EUROFOREST Saint Bonnet de Joux (France) |
| JULY | 18-22/07/18 | INTERFORST Munich (Germany) |
| SEPT | 11-14/09/18 | Salon SPACE Rennes (France) |
| SEPT | 14-16/09/18 | Foire de Beaucroissant (France) |
| SEPT | 18-20/09/18 | Salon Vert Saint Chéron (France) |
| OCT | 03-05/10/18 | Sommet de l'élevage Cournon (France) |
| OCT | 20-21/10/18 | Foire de Poussay (France) |

All exhibitions on www.a-m-r.fr

AMR

PUISSANCE & PERFORMANCES

AMR - 1 rue de l'Industrie - 67390 ELSENHEIM - FRANCE
Tél. 03 88 58 69 69 - Fax 03 88 58 69 70 - info@a-m-r.fr - www.a-m-r.fr

